



VeriPRO[®] Hearing Protector Fit Test System

***What you don't know CAN
hurt you (or your employees)***

Penny Goodstein, MPH, CIH, CSP
BP Exploration, AK (BPXA)



How hard can it be to wear earplugs?

Most people think it is a no-brainer. NOT TRUE!

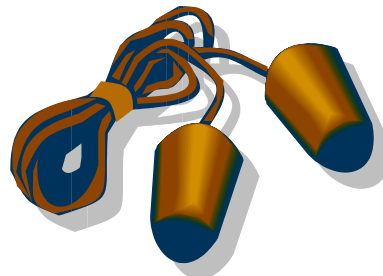
New VeriPRO® earplug fit testing technology from Howard Leight enables people to determine the actual attenuation of any earplug, in nearly any environment.

Employees can use the same earplug they always use for the fitting. No changes to the plug are required.

VeriPRO® Earplug Fit Testing Method



- Measures the ***Personal Attenuation Rating (PAR)*** for each employee
- Works with ***any ear plug***, corded or uncorded, from any manufacturer
- Fulfills regulatory requirements to ensure ***proper initial fitting*** of hearing protection
- ***Documents*** training and proper fit for new or existing employees
- Provides an ideal opportunity for ***one-on-one education***



VeriPRO® Earplug Fit Testing Method



All VeriPRO® systems include:

- **CD with software**
- **Audiometrically Balanced Headphones**
- **Audio Processor**
- **Replacement Ear Cushions – 1 pair**
- **USB Cable - *connects Audio Processor to your computer***
- **Sample Container – with assortment of Howard Leight earplugs**
- **Quick Reference Guide - *provides an overview of VeriPRO® function, step-by-step instructions and basic troubleshooting***
- **Carrying Case**

VeriPRO® Earplug Fit Testing Method





In a VeriPro® test, users match the loudness level of tones at various frequencies from one ear to the other.

Two test modes, Complete Check and Quick Check

VeriPRO® interface provides helpful graphics and instructions to guide users through the process.



How does it work?

- The VeriPRO® test is not a traditional hearing test. Instead, it measures the user's ability to identify and balance sound levels from the right to left ear, both with and without their standard earplugs. This process, called "Loudness-Balance," determines the Personal Attenuation Rating (PAR) achieved in each ear.

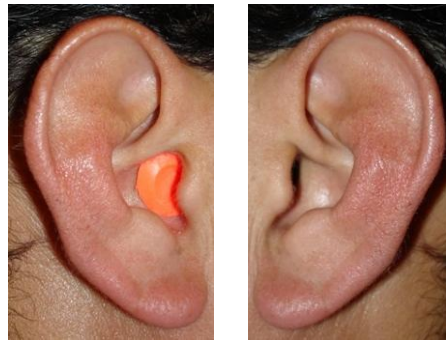
How does it work?



Part 1

**Both Ears
Unoccluded**

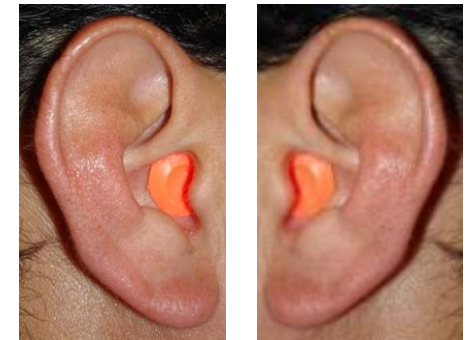
- Sets baseline level for each ear
- Measures any asymmetry between ears



Part 2

**Right Ear
Occluded**

- Right ear attenuation measured



Part 3

**Both Ears
Occluded**

- Left ear attenuation measured

VeriPRO® Earplug Fit Testing Method





How it helps

- **Everyone in the hearing conservation program has the quick version of the test.**
- **If the test indicates they aren't getting a good fit, or if the audiogram indicates hearing problems, then they receive the complete test.**
- **Sometimes re-training, and/or different earplugs, are required.**



Reaction of the Occupational Health Technician who administers the VeriPRO[®] tests:

- The #1 effect is re-educating people on how to put in an earplug properly. It allows them to measure the effects of a properly placed earplug.**
- a few needed different plugs**
- a good tool to use to understand why people are having problems with hearing protection.**