



2006 Survey on Petroleum Industry Occupational Injuries, Illnesses, and Fatalities Summary Report: Aggregate Data Only

**As Reported to the
American Petroleum Institute**

Covering Petroleum Operations of Reporting Companies

API Publication 2385
June 2007

Prepared by:

Jeff Obermiller
Statistics Department
American Petroleum Institute
202-682-8508
obermiller@api.org



2006 Survey on Petroleum Industry Occupational Injuries, Illnesses, and Fatalities Summary Report: Aggregate Data Only

**As Reported to the
American Petroleum Institute**

Covering Petroleum Operations of Reporting Companies

API Publication 2385
June 2007

COPYRIGHT NOTICE

All information offered in this report is the sole and exclusive property of the American Petroleum Institute.

You may not reproduce, upload, post, transmit, download, or distribute, resell or otherwise transfer outside of your company without express consent of the American Petroleum Institute.

Copyright©2007 The American Petroleum Institute

SPECIAL NOTES

API publications necessarily address problems of a general nature. With respect to particular circumstances, local, state, and federal laws and regulations should be reviewed.

API is not undertaking to meet the duties of employers, manufacturers, or suppliers to warn and properly train and equip their employees, and others exposed, concerning health and safety risks and precautions, nor undertaking their obligations under local, state, or federal laws.

Information concerning safety and health risks and proper precautions with respect to particular materials and conditions should be obtained from the employer, the manufacturer or supplier of that material, or the material safety data sheet.

Nothing contained in any API publication is to be construed as granting any right, by implication or otherwise, for the manufacture, sale, or use of any method, apparatus, or product covered by letters patent. Neither should anything contained in the publication be construed as insuring anyone against liability for infringement of letters patent.

Generally, API standards are reviewed and revised, reaffirmed, or withdrawn at least every five years. Sometimes a one-time extension of up or two years will be added to this review cycle. This publication will no longer be in effect five years after its publication date as an operative API standard or, where an extension has been granted, upon republication. Status of the publication can be ascertained from the API Authoring Department, telephone (202) 682-8000. A catalog of API publications and materials is published annually and updated quarterly by API, 1220 L Street, NW, Washington, D.C. 20005.

This document was produced under API standardization procedures that ensure appropriate notification and participation in the developmental process and is designed as an API standard. Questions concerning the interpretation of the content of this standard or comments and questions concerning the procedures under which this standard was developed should be directed in writing to the director of the Regulatory and Scientific Affairs Department (shown on the title page of this document), American Petroleum Institute, 1220 L Street, NW, Washington, D.C. 20005. Requests for permission to reproduce or translate all or any part of the material published herein should also be addressed to the director.

Every effort has been made by the Institute to assure the accuracy and reliability of the data contained in this document; however, the Institute makes no representation, warranty or guarantee in connection with this publication and hereby expressly disclaims any liability or responsibility for loss or damage resulting from its use or for the violation of any federal, state, or municipal regulation with which this publication may conflict.

API standards are published to facilitate the broad availability of proven, sound engineering and operating practices. These standards are not intended to obviate the need for applying sound engineering judgment regarding when and where these standards should be utilized. The formulation and publication of API standards is not intended in any way to inhibit anyone from using any other practices.

Any manufacturer marking equipment or materials in conformance with the marking requirements of an API standard is solely responsible for complying with all the applicable requirements of that standard. API does not represent, warrant, or guarantee that such products do in fact conform to the applicable API standard.

Table of Contents

	Page
Introduction	1
Background	1
Summary	2
Tables	
UNITED STATES OPERATIONS	
Company Employees.....	6
Contract Workers	7
NON-U.S. OPERATIONS	
Company Employees.....	8
Contract Workers	9
SHIFT EXPOSURE INFORMATION	
Offshore E&P&Drilling	11
Marine	11
FATALITIES	
Summary	12
Narrative of Fatalities	13
APPENDICES	
Appendix A: List of Participants	
Appendix B: Data Collection Forms	

INTRODUCTION

The Survey on Petroleum Industry Occupational Injuries, Illnesses and Fatalities (OII) is conducted annually. Participation is voluntary and the number of participating companies varies from year to year. Therefore, exercise caution when using this data to characterize the performance of the industry as a whole.

The Survey's results are documented in the *2006 Benchmarking Survey of Occupational Injuries, Illnesses, and Fatalities in Petroleum Industry: Report to Participants*. This Report is only available on *The Occupational Injuries, Illnesses and Fatalities Reporting System website* (<http://oii.api.org>). Access to this report is limited to companies that gave API permission to share their 2006 data.

Participants are asked to submit data according to the Bureau of Labor Statistics (BLS) guidelines. Therefore, this report provides incidence rates per 200,000 hours worked on the same basis as those reported by BLS.

BACKGROUND

API has been collecting data regarding workplace injuries, illnesses and fatalities in *The Survey on Occupational Injuries, Illnesses and Fatalities (OII)* since 1931. Prior to the 1999 survey, companies submitted employee data for their U.S. operations only. In 2000, API expanded the scope of the *OII* and began collecting employee and contract worker data for operations both inside and outside of the U.S.

A second change introduced in 2000 gave participants the ability to submit their data electronically over the Internet using *The Occupational Injuries, Illnesses and Fatalities Reporting System* at <http://oii.api.org/>. Features of this online database include automatic data checks, online instructions, and reports. In addition, for companies willing to share their data have the ability to produce customized benchmarking reports.

While conducting the 2001 survey, API learned that a number of companies no longer track certain data. Consequently, it was decided to make those data fields optional in the 2002 survey. These optional data fields are "The Average Number of Employees", "Job Transfer or Restriction", "All Injury Cases" and "All Illness Cases".

The Occupational Injuries, Illnesses, and Fatalities Reporting System generates two broad categories of online reports for each type of worker—Full Benchmarking and Limited Benchmarking. Companies submitting data for both required and optional fields as well as giving API permission to share their data with other participants have access to Full Benchmark reports. Companies that only submit data for required fields only have access to Limited Benchmarking reports.

SUMMARY

U.S. Operations: Company Employees

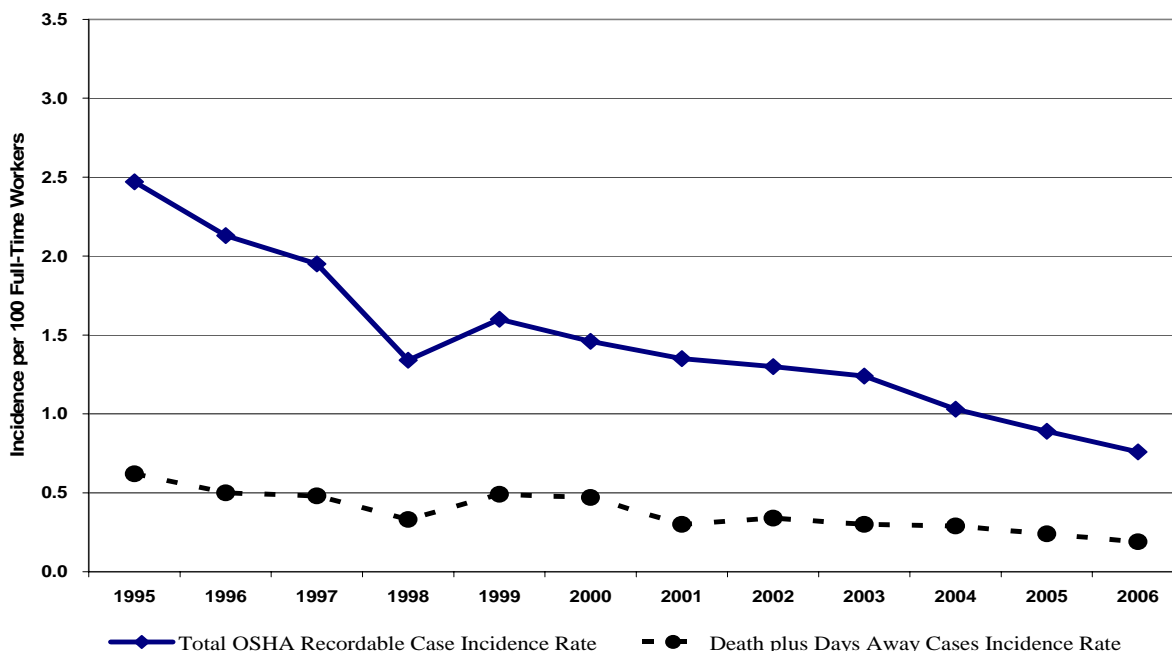
2006 data pertaining to U.S. occupational injuries, illnesses and fatalities for an employer's own employees were submitted to the American Petroleum Institute (API) by fifty-one oil and gas companies, employing persons with a total work experience of 358 million hours. In 2005, sixty-three companies reported 356 million hours.

In 2006, the *Total OSHA Recordable Case Incidence Rate* reported was 0.74, compared to 0.89 for 2005. This rate is the number of total recordable cases per 200,000 hours worked, or approximately the number of cases per 100 full-time workers per year.

The *Death Plus Days Away Incidence Rate* reported for 2006 was 0.19 per 200,000 hours worked—or one case for every 526 employees, compared to 0.24 in 2005—or one case for every 417 employees.

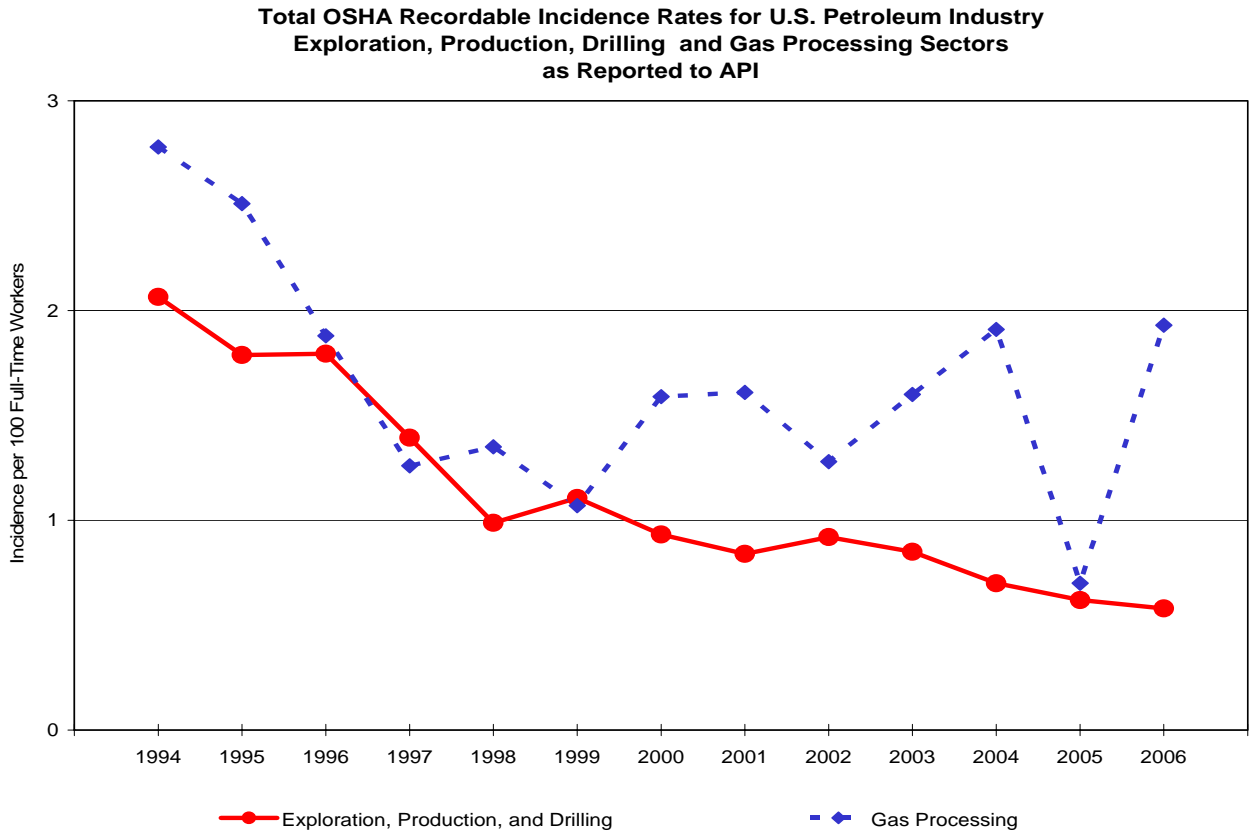
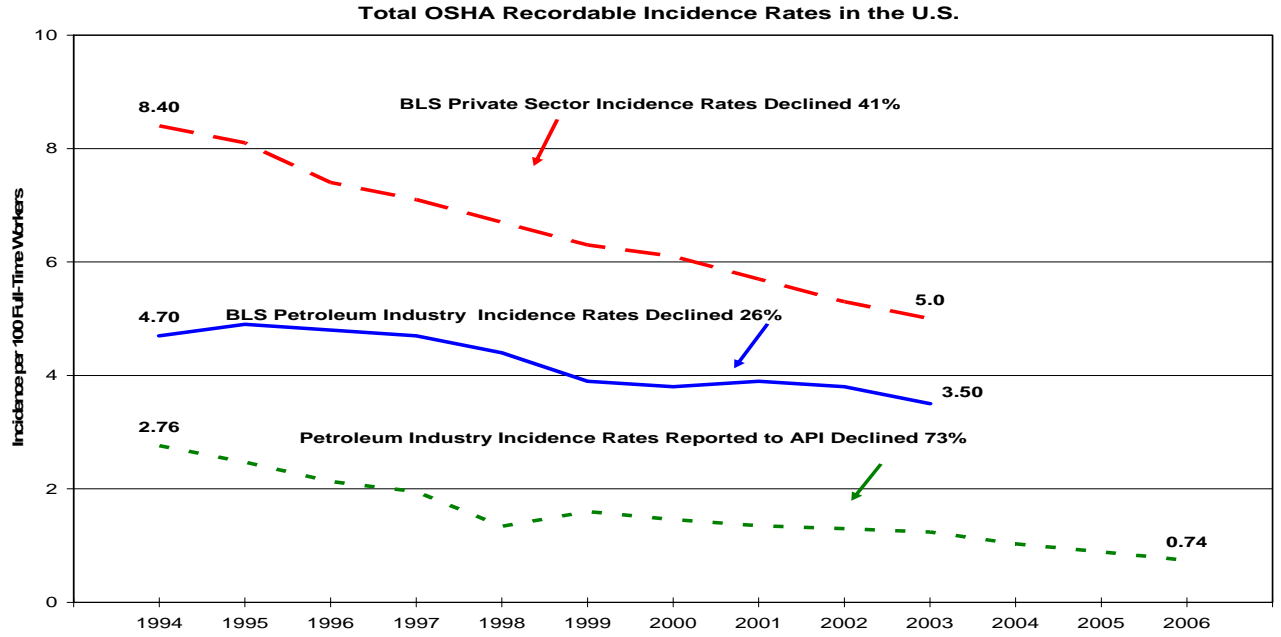
Since 1995, the reported *Total OSHA Recordable Case Incidence Rate* and *Death plus Days Away Incidence Rate* have improved an average of 9.7 and 9.0 percent per year, respectively (see the figure below).

Reported U.S. Occupational Injuries, Illnesses, and Fatalities in the Petroleum Industry Company Employees

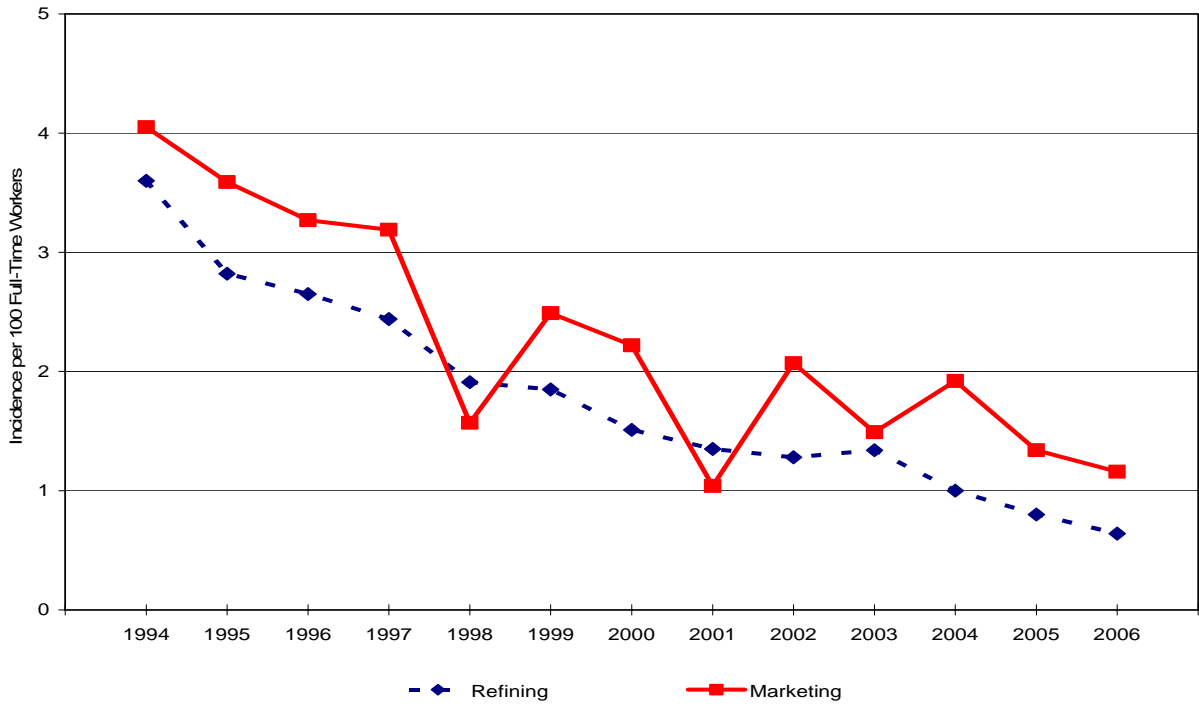


Significant differences exist among companies regarding return-to-work policies and practices. Therefore, use of the *Death plus Days Away Incidence Rates* alone to judge and compare company safety performance is not recommended.

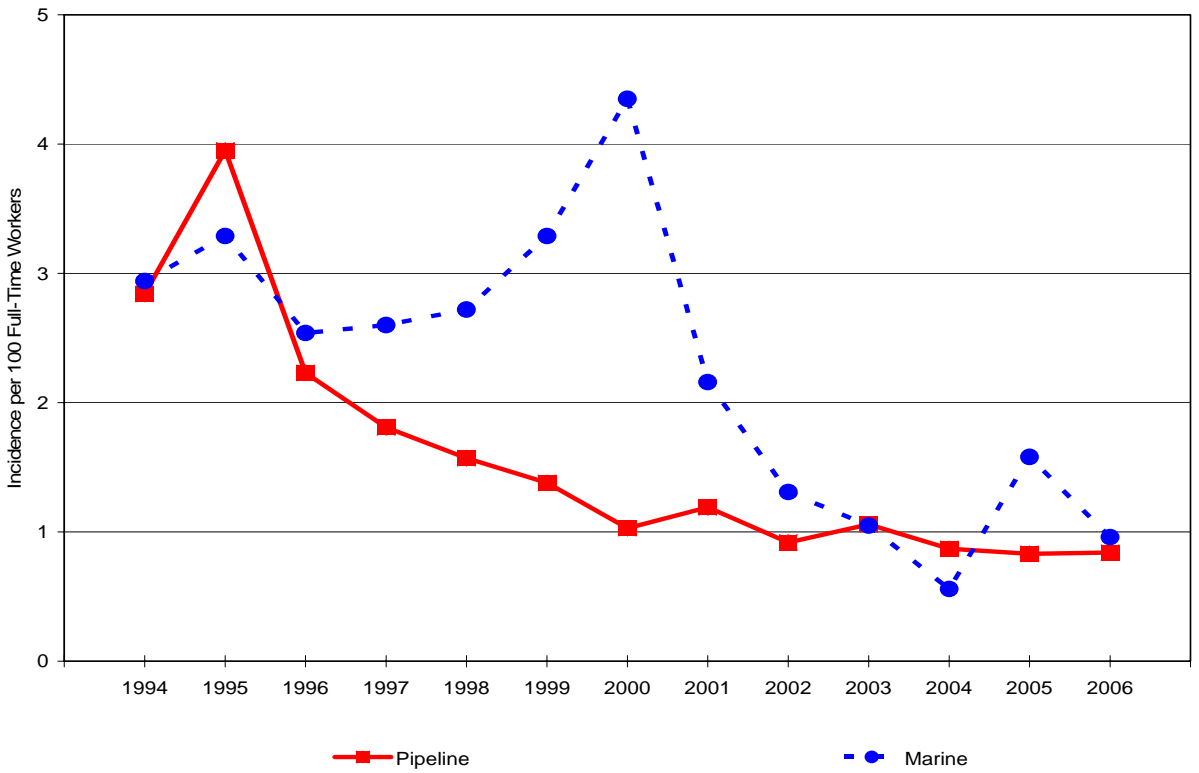
The total OSHA recordable incidence rate as reported to API has declined by more than half over the past twelve years. The following graphs show the twelve-year trend for selected U.S. petroleum industry sectors.



**Total OSHA Recordable Incidence Rates for U.S. Petroleum Industry
Marketing and Refining Sectors as Reported to API**



**Total OSHA Recordable Incidence Rates for U.S. Petroleum Industry
Pipeline and Marine Sectors as Reported to API**



U.S. Operations: Contract Workers

In 2006, thirty-one oil and gas companies submitted contract worker data for their U.S. operations. These workers provided 339 million hours of service to these companies. The *Total OSHA Recordable Case Incidence Rate* reported for these contract workers was 1.05. The *Death plus Days Away Incidence Rate* reported for this group of workers was 0.24 per 200,000 hours worked—or one case for every 417 workers.

Non-U.S. Operations: Company Employees

Sixteen companies (including one subsidiary) reported non-U.S. employee data. During 2006, these employees had a total work experience of 380 million hours. For this group, the reported *Total OSHA Recordable Case Incidence Rate* was 0.29.

Their *Death plus Days Away Incidence Rate* was 0.07 per 200,000 hours worked—or one case for every 1,429 employees.

Non-U.S. Operations: Contract Workers

Thirteen companies reported data for non-U.S. contract workers. In 2006, this category of worker performed a total of 797 million hours in their non-U.S. operations. The *Total OSHA Recordable Case Incidence Rate* reported for these contract workers was 0.47. The *Death plus Days Away Incidence Rate* reported for this group of workers was 0.12 per 200,000 hours worked—or one case for every 833 workers

Survey on Petroleum Industry Occupational Injuries, Illnesses and Fatalities
Limited Benchmarking: All Sharing Companies
U.S. Operations: Company Employees for 2006
Totals by Function

Function	Total Hours Worked (Thousands)	OSHA Recordable Cases Classified by Severity		Total OSHA Recordable Cases	Incidence Rates*		
		Cases of Death	Cases of Days Away From Work		Incidence Rate Total OSHA Recordable Cases	Death plus Days Away From Work Cases	Days Away From Work Cases
Total U.S. Operations: Company Employees 2006	357,923	3	338	1,329	.74	.19	.19
A . UPSTREAM							
Offshore Expl & Prodn & Drilling ¹	11,609	0	5	28	.48	.09	.09
Onshore Expl & Prodn & Drilling ¹	50,720	0	40	154	.61	.16	.16
Expl & Prodn & Drilling Subtotal	62,329	0	45	182	.58	.14	.14
Gas Processing	3,427	0	4	33	1.93	.23	.23
Upstream Support Services	7,032	0	1	9	.26	.03	.03
Upstream Subtotal	72,788	0	50	224	.62	.14	.14
B . DOWNSTREAM							
Marketing-Wholesale	10,949	0	18	43	.79	.33	.33
Marketing-Retail	31,454	0	119	263	1.67	.76	.76
Marketing-Not separated ²	47,749	2	17	216	.90	.08	.07
Marketing Subtotal	90,152	2	154	522	1.16	.35	.34
Refining ¹	88,203	0	66	283	.64	.15	.15
Lubricants/Specialties	18,292	0	17	99	1.08	.19	.19
Downstream Support Services	12,599	0	3	10	.16	.05	.05
Downstream Subtotal	209,246	2	240	914	.87	.23	.23
C . PIPELINE							
Pipeline-Liquid	10,981	0	23	60	1.09	.42	.42
Pipeline-Gas	253	0	0	2	1.58	0.00	0.00
Pipeline-Not separated ⁴	10,024	0	4	27	.54	.08	.08
Pipeline Subtotal	21,258	0	27	89	.84	.25	.25
MARINE	3,543	0	4	17	.96	.23	.23
RESEARCH & DEV	7,991	0	1	9	.23	.03	.03
SUPPORT SERVICES	43,097	1	16	76	.35	.08	.07

1 Include Power Generation personnel that support this function.

2 Marketing data unable to be separated into Wholesale or Retail functions.

3 Subsidiary data is not included in this table.

4 Pipeline data unable to be separated into Liquid or Gas functions.

5 Not covered under Operating Segments.

*API calculated fields: Total OSHA Recordable Case Incidence Rate = Total OSHA Recordable Cases multiplied by 200 divided by the hours worked (in thousands)

Death plus Days Away From Work Cases Incidence Rate = Death plus Days Away From Work Cases multiplied by 200 divided by the hours worked (in thousands)

Days Away From Work Cases Incidence Rate = Days Away From Work Cases multiplied by 200 divided by the hours worked (in thousands)

Survey on Petroleum Industry Occupational Injuries, Illnesses and Fatalities
Limited Benchmarking: All Sharing Companies
U.S. Operations: Contract Workers for 2006
Totals by Function

Function	Total Hours Worked (Thousands)	OSHA Recordable Cases Classified by Severity		Total OSHA Recordable Cases	Incidence Rates*		
		Cases of Death	Cases of Days Away From Work		Incidence Rate Total OSHA Recordable Cases	Death plus Days Away From Work Cases	Days Away From Work Cases
Total U.S. Operations: Contract Workers 2006	339,338	13	395	1,785	1.05	.24	.23
A . UPSTREAM							
Offshore Expl & Prodn & Drilling ¹	42,153	3	43	216	1.02	.22	.20
Onshore Expl & Prodn & Drilling ¹	104,233	7	247	1,026	1.97	.49	.47
Expl & Prodn & Drilling Subtotal	146,386	10	290	1,242	1.70	.41	.40
Gas Processing	4,811	0	6	33	1.37	.25	.25
Upstream Support Services	3,618	0	0	9	.50	0.00	0.00
Upstream Subtotal	154,815	10	296	1,284	1.66	.40	.38
B . DOWNSTREAM							
Marketing-Wholesale	5,152	0	3	17	.66	.12	.12
Marketing-Retail	7,415	0	3	4	.11	.08	.08
Marketing-Not separated ²	5,586	0	3	20	.72	.11	.11
Marketing Subtotal	18,153	0	9	41	.45	.10	.10
Refining ¹	121,306	2	50	306	.50	.09	.08
Lubricants/Specialties	3,967	0	2	6	.30	.10	.10
Downstream Support Services	4,033	0	3	18	.89	.15	.15
Downstream Subtotal	147,459	2	64	371	.50	.09	.09
C . PIPELINE							
Pipeline-Liquid	2,933	0	4	17	1.16	.27	.27
Pipeline-Gas	0	0	0	0	0.00	0.00	0.00
Pipeline-Not separated ⁴	9,975	0	8	40	.80	.16	.16
Pipeline Subtotal	12,908	0	12	57	.88	.19	.19
MARINE	1,023	0	0	2	.39	0.00	0.00
RESEARCH & DEV	798	0	0	2	.50	0.00	0.00
SUPPORT SERVICES	22,335	1	23	69	.62	.21	.21

1 Include Power Generation personnel that support this function.

2 Marketing data unable to be separated into Wholesale or Retail functions.

3 Subsidiary data is not included in this table.

4 Pipeline data unable to be separated into Liquid or Gas functions.

5 Not covered under Operating Segments.

*API calculated fields: Total OSHA Recordable Case Incidence Rate = Total OSHA Recordable Cases multiplied by 200 divided by the hours worked (in thousands)

Death plus Days Away From Work Cases Incidence Rate = Death plus Days Away From Work Cases multiplied by 200 divided by the hours worked (in thousands)

Days Away From Work Cases Incidence Rate = Days Away From Work Cases multiplied by 200 divided by the hours worked (in thousands)

Survey on Petroleum Industry Occupational Injuries, Illnesses and Fatalities
Limited Benchmarking: All Sharing Companies
Non-U.S. Operations: Company Employees for 2006
Totals by Function

Function	Total Hours Worked (Thousands)	OSHA Recordable Cases Classified by Severity		Total OSHA Recordable Cases	Incidence Rates*		
		Cases of Death	Cases of Days Away From Work		Incidence Rate Total OSHA Recordable Cases	Death plus Days Away From Work Cases	Days Away From Work Cases
Total Non-U.S. Operations: Company Employees 2006	379,965	4	125	544	.29	.07	.07
A . UPSTREAM							
Offshore Expl & Prodn & Drilling ¹	51,532	1	12	53	.21	.05	.05
Onshore Expl & Prodn & Drilling ¹	78,549	2	24	92	.23	.07	.06
Expl & Prodn & Drilling Subtotal	130,081	3	36	145	.22	.06	.06
Gas Processing	980	0	2	4	.82	.41	.41
Upstream Support Services	1,116	0	0	0	0.00	0.00	0.00
Upstream Subtotal	132,177	3	38	149	.23	.06	.06
B . DOWNSTREAM							
Marketing-Wholesale	12,265	0	4	9	.15	.07	.07
Marketing-Retail	0	0	0	0	0.00	0.00	0.00
Marketing-Not separated ²	118,333	0	40	231	.39	.07	.07
Marketing Subtotal	130,598	0	44	240	.37	.07	.07
Refining ¹	24,292	0	8	35	.29	.07	.07
Lubricants/Specialties	33,340	0	20	58	.35	.12	.12
Downstream Support Services	645	0	0	0	0.00	0.00	0.00
Downstream_Subtotal	188,875	0	72	333	.35	.08	.08
C . PIPELINE							
Pipeline-Liquid	637	0	1	4	1.26	.31	.31
Pipeline-Gas	0	0	0	0	0.00	0.00	0.00
Pipeline-Not separated ⁴	0	0	0	0	0.00	0.00	0.00
Pipeline Subtotal	637	0	1	4	1.26	.31	.31
MARINE	18,187	1	7	26	.29	.09	.08
RESEARCH & DEV	585	0	0	0	0.00	0.00	0.00
SUPPORT SERVICES	39,504	0	7	32	.16	.04	.04

1 Include Power Generation personnel that support this function.

2 Marketing data unable to be separated into Wholesale or Retail functions.

3 Subsidiary data is not included in this table.

4 Pipeline data unable to be separated into Liquid or Gas functions.

5 Not covered under Operating Segments.

*API calculated fields: Total OSHA Recordable Case Incidence Rate = Total OSHA Recordable Cases multiplied by 200 divided by the hours worked (in thousands)

Death plus Days Away From Work Cases Incidence Rate = Death plus Days Away From Work Cases multiplied by 200 divided by the hours worked (in thousands)

Days Away From Work Cases Incidence Rate = Days Away From Work Cases multiplied by 200 divided by the hours worked (in thousands)

Survey on Petroleum Industry Occupational Injuries, Illnesses and Fatalities
Limited Benchmarking: All Sharing Companies
Non-U.S. Operations: Contract Workers for 2006
Totals by Function

Function	Total Hours Worked (Thousands)	OSHA Recordable Cases Classified by Severity		Total OSHA Recordable Cases	Incidence Rates*		
		Cases of Death	Cases of Days Away From Work		Incidence Rate Total OSHA Recordable Cases	Death plus Days Away From Work Cases	Days Away From Work Cases
Total Non-U.S. Operations: Contract Workers 2006	797,216	22	457	1,862	.47	.12	.11
A . UPSTREAM							
Offshore Expl & Prodn & Drilling ¹	222,134	3	131	602	.54	.12	.12
Onshore Expl & Prodn & Drilling ¹	356,998	13	207	825	.46	.12	.12
Expl & Prodn & Drilling Subtotal	579,132	16	338	1,427	.49	.12	.12
Gas Processing	1,889	0	0	2	.21	0.00	0.00
Upstream Support Services	8,403	0	1	26	.62	.02	.02
Upstream Subtotal	589,424	16	339	1,455	.49	.12	.12
B . DOWNSTREAM							
Marketing-Wholesale	21,387	2	16	35	.33	.17	.15
Marketing-Retail	0	0	0	0	0.00	0.00	0.00
Marketing-Not separated ²	88,506	2	60	147	.33	.14	.14
Marketing Subtotal	109,893	4	76	182	.33	.15	.14
Refining ¹	42,402	0	20	126	.59	.09	.09
Lubricants/Specialties	21,482	2	10	36	.34	.11	.09
Downstream Support Services	3,043	0	3	18	1.18	.20	.20
Downstream Subtotal	176,820	6	109	362	.41	.13	.12
C . PIPELINE							
Pipeline-Liquid	259	0	0	4	3.09	0.00	0.00
Pipeline-Gas	0	0	0	0	0.00	0.00	0.00
Pipeline-Not separated ⁴	0	0	0	0	0.00	0.00	0.00
Pipeline Subtotal	259	0	0	4	3.09	0.00	0.00
MARINE	13,014	0	3	10	.15	.05	.05
RESEARCH & DEV	66	0	0	0	0.00	0.00	0.00
SUPPORT SERVICES	17,633	0	6	31	.35	.07	.07

¹ Include Power Generation personnel that support this function.

² Marketing data unable to be separated into Wholesale or Retail functions.

³ Subsidiary data is not included in this table.

⁴ Pipeline data unable to be separated into Liquid or Gas functions.

⁵ Not covered under Operating Segments.

*API calculated fields: Total OSHA Recordable Case Incidence Rate = Total OSHA Recordable Cases multiplied by 200 divided by the hours worked (in thousands)

Death plus Days Away From Work Cases Incidence Rate = Death plus Days Away From Work Cases multiplied by 200 divided by the hours worked (in thousands)

Days Away From Work Cases Incidence Rate = Days Away From Work Cases multiplied by 200 divided by the hours worked (in thousands)

Page Intentionally Blank

**2006 Benchmarking Survey of Occupational Injuries, Illness, and Fatalities in the Petroleum Industry: Report to Participants
Shift Exposure Information**

Offshore Exploration & Production and Drilling

U.S. OPERATIONS	Hours Worked or Exposure Hours per Day While on Duty	Duty Cycle	
		Days On	Days Off
		<hr/>	
Company Employees			
Amerada Hess Corporation	12	12	7
Anadarko Petroleum Corporation	12	14	14
BP	12		
ConocoPhillips Inc	12		
El Paso Production	12	7	7
Marathon Oil Company	12	7	7
Contractors			
BP	12		
ConocoPhillips Inc	12		
El Paso Production	12	7	7
Marathon Oil Company	12	7	7
NON-U.S. OPERATIONS			
Company Employees			
Amerada Hess Corporation	12	7	7
BP	12		
CNOCC LIMITED	12	28	28
ConocoPhillips Inc	12		
Marathon Oil Company	12	14	14
Occidental Oil & Gas Corporation	12	28	28
Contractors			
BP	12		
CNOCC LIMITED	12	28	28
ConocoPhillips Inc	12		
Marathon Oil Company	12	14	14
Occidental Oil & Gas Corporation	12	28	28

**2006 Benchmarking Survey of Occupational Injuries, Illness, and Fatalities in the Petroleum Industry: Report to Participants
Shift Exposure Information**

Marine

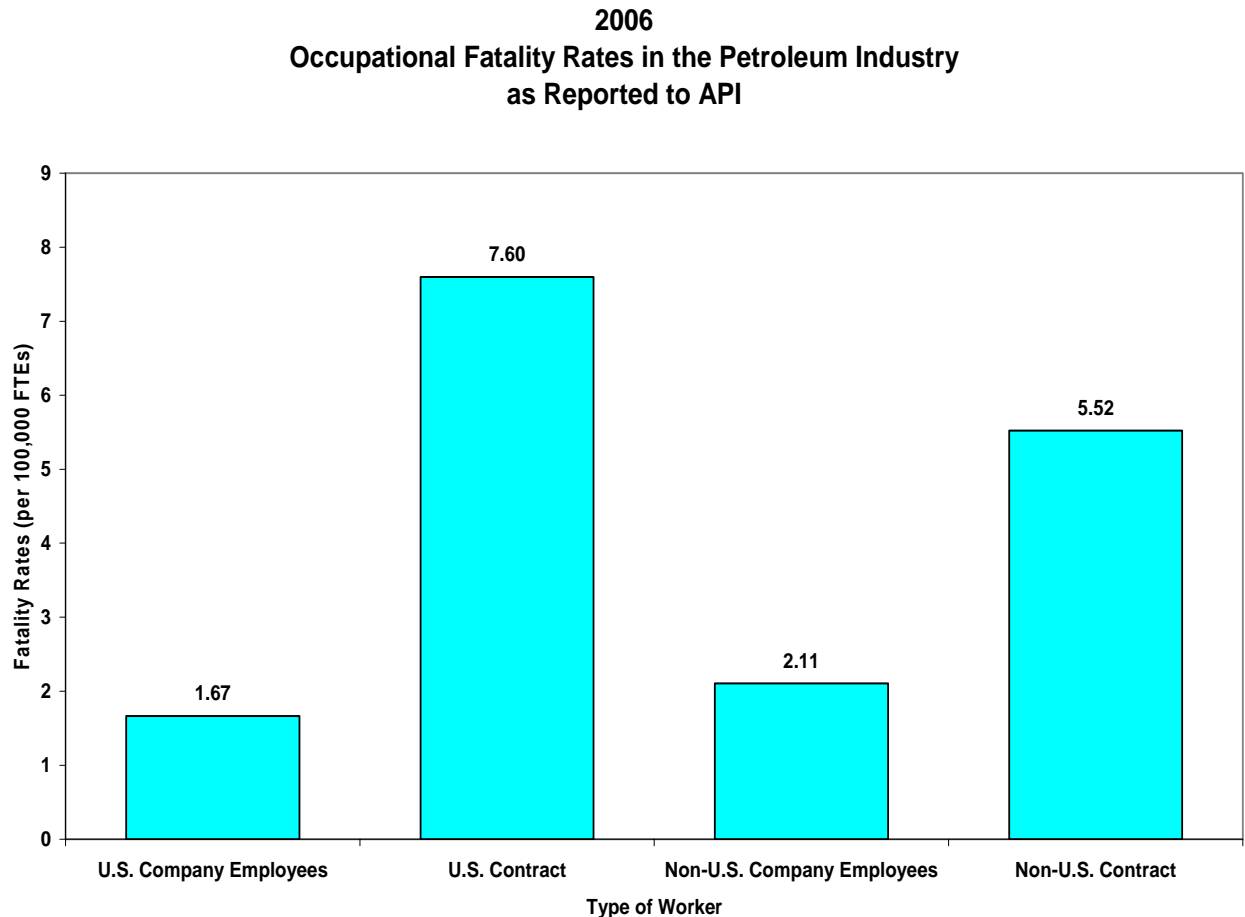
U.S. OPERATIONS	Hours Worked or Exposure Hours per Day While on Duty	Duty Cycle	
		Days On	Days Off
		<hr/>	
Company Employees			
ConocoPhillips Inc	24	30	
Contractors			
ConocoPhillips Inc	24	30	
NON-U.S. OPERATIONS			
Company Employees			
Amerada Hess Corporation	12	30	30
CNOCC LIMITED	12	28	28
ConocoPhillips Inc	24	30	
Contractors			
CNOCC LIMITED	12	28	28
ConocoPhillips Inc	24	30	30

2006 Summary of Fatal Injuries in the Petroleum Industry As Reported to the American Petroleum Institute

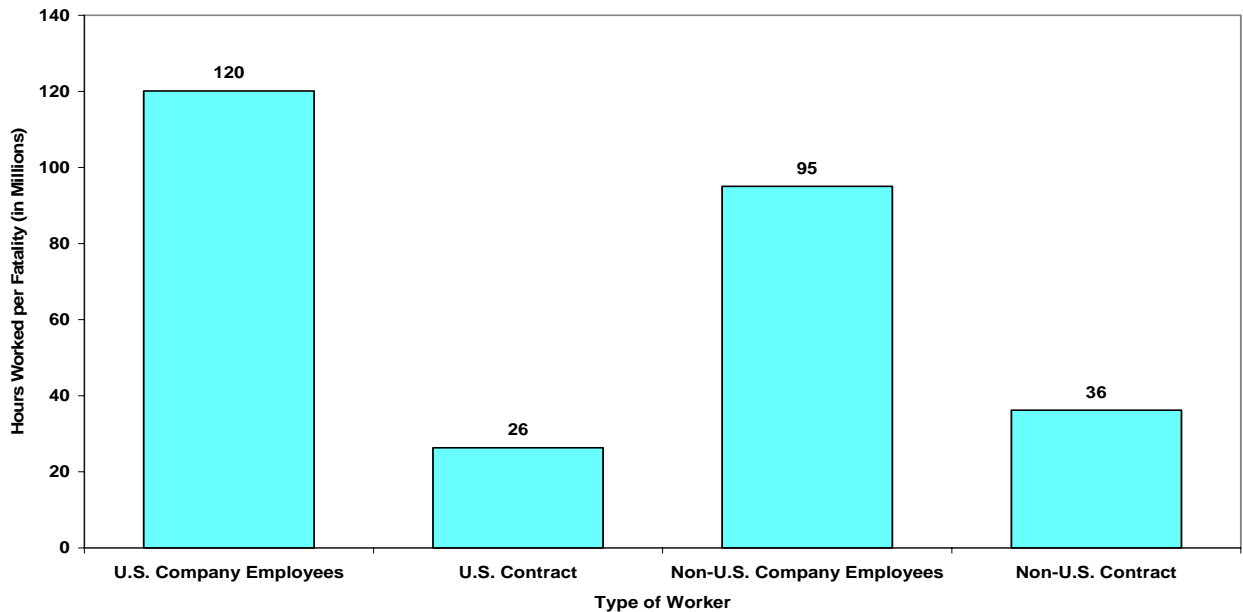
In 2006, participants reported sixteen fatal accidents for their U.S. operations. Three fatalities occurred among company employees and thirteen among contract workers. For company employees, this is equivalent to one fatality per 120 million hours worked or 1.67 fatalities per 100,000 workers. Comparatively, for contract workers it is the equivalent of one fatality per 26 million hours worked or 7.60 fatalities per 100,000 contract workers.

Participants reported twenty-six fatal accidents in their operations outside of the U.S. During 2006, four company employees and twenty-two contractors died providing service in operations outside the U.S. For company employees, this is equivalent to one fatality per 95 million hours worked or 2.11 fatalities per 100,000 employees. Comparatively, contractors experienced one fatality per 36 million hours worked or 5.52 fatalities per 100,000 workers.

The following graphs compare fatalities between the four categories of workers.



2006
Number of Hours Worked per Occupational Fatality
in the Petroleum Industry as Reported to API



Narratives of Fatal Incidents for Company Operations

API has published information provided by companies on fatal accidents in the petroleum industry since 1933. Companies are asked to describe each incident that occurred within company operations.

In 2006, ten companies reported experiencing forty-two fatalities. Several of those companies submitted detailed information about the circumstances surrounding three of these fatalities. This brief narrative is intended to provide information that could be used to avoid the occurrence of similar accidents in the future.

U.S. OPERATIONS: COMPANY EMPLOYEES

Marketing – Not Separated

April 4, 2006 — A sales associate was performing normal duties when her significant other entered the store. He locked the door, doused her with gasoline and lit the gasoline with a match catching her clothing on fire.

July 17, 2006 – A field trainer was involved in a vehicle accident while commuting on a public bus.

Support Services

October 10, 2006 – Employee killed in a car accident while on company business.

U.S. OPERATIONS: CONTRACT WORKERS

Onshore Expl & Prodn & Drilling

November 17, 2006 – Contractor died from a head injury after being struck by a pressurized hose fitting which he was using to clean a mud pit tank.

Refining

April 10, 2006 – Fatal injury occurred from a tank roof collapse.

Support Services – Upstream

November 13, 2006 – Serious head injury to contractor during well set up work in Milne Point.

Support Services – Downstream

July 21, 2006 – A contractor employee in the basket of a manlift sustained fatal injuries when he was caught between the control panel in the manlift he was operating and a beam.

Support Services

January 6, 2006 – A bulldozer constructing an earthen dike within a retention pond became submerged.

NON-U.S. OPERATIONS: COMPANY EMPLOYEES

Offshore Expl & Prodn & Drilling

July 19, 2006 – Fatal injury occurred from an electrical explosion that resulted in a fire.

Onshore Expl & Prodn & Drilling

August 23, 2006 – The employee, a VSD Specialist, died on August 23, 2006 at 7:10 AM in a single vehicle accident while he was driving from the facility to the camp (located at 20 kms) after night work shift. The accident occurred when his vehicle ran off the road and crashed against a tree.

Support Services

July 11, 2006 – At approximately 7:35 AM, the employee left the 5th floor through the stairs. Some minutes later, another employee entered the stairs on the 1st floor when he heard something falling against the rails and as he looked up, he saw the first employee falling down through the stairwell and landed on the floor. No one saw how or/and from what floor he fell over the guard rail and into the stairwell. The employee was immediately transferred to the hospital. The employee died at 12:00 noon during surgery.

NON-U.S. OPERATIONS: CONTRACT WORKERS

Onshore Exploration & Production and Drilling

March 17, 2006—Welder was burnt, became asphyxiated and died while working inside 30” pipeline.

April 23, 2006 – A contractor lorry delivering lubricants from our warehouse in Cuttack (Orissa), India, collided with another heavy vehicle. The accident resulted in the death of the driver's assistant and a passenger (third party).

October 12, 2006 – Fatal injury occurred as a result of being struck by a falling tree during pipeline right-of-way logging.

Support Services – Upstream

August 19, 2006 – Suburban was involved in a single car rollover accident. Victim was thrown from vehicle and died at the scene of the accident.

August 30, 2006 – Vehicle was unable to stop and slid under the truck in front. The driver was killed as a result from this accident.

Lubricants/Specialties

June 2, 2006 – A contracted truck, delivering lubricants, collided with a bus. The truck driver, accompanied by an assistant, had 16 additional passengers on board (in contravention of the DDS). The driver and one passenger (third party) died.

APPENDICES

Page Intentionally Blank

2006 Survey on Petroleum Industry Occupational Injuries, Illnesses and Fatalities
List of Participants

<u>COMPANY</u>	Type of Data Reported			
	<u>U.S. Company Operations</u>	<u>U.S. Contractors</u>	<u>Non-U.S. Company Operations</u>	<u>Non-U.S. Contractors</u>
Amerada Hess Corporation	X		X	
Anadarko Petroleum Corporation	X	X	X	
Belle Fourche Pipeline Company	X			
BP	X	X	X	X
BP Dome Pipeline Corporation	X	X		
BP Pipelines (North America) Inc	X	X		
Cenex Pipeline Company	X			
Chevron Corporation	X	X	X	X
Ciniza Pipeline Company	X			
Citgo Petroleum Corporation	X	X		
CNOOC Limited				X
Colonial Pipeline Company	X	X		
ConocoPhillips Inc	X	X	X	X
Croft Petroleum Company	X	X		
Cross Oil Refining & Marketing	X			
Devon Energy Corporation	X	X	X	X
El Paso Production Company	X	X		
Enbridge (U.S.) Inc	X			
Enbridge Pipelines (North Dakota)	X			
Energy Pro Inc.	X			
Equistar Pipeline Operations	X			
Explorer Pipeline Company	X	X		
ExxonMobil Downstream	X	X	X	X
ExxonMobil Pipeline Co	X	X		
ExxonMobil Support Services	X	X	X	X
ExxonMobil Upstream	X	X	X	X
Kinder Morgan Canada Inc	X	X	X	X
Kinder Morgan Energy Partners	X			
Koch Pipeline	X	X		
Magellan Midstream Partners LP	X			
Marathon Ashland Petroleum	X	X		
Marathon Oil Company	X	X	X	X
Marathon Pipeline Company	X	X		
Michael D Lillis Oil & Gas	X			
Motiva Enterprises LLC	X	X		
Murphy Oil Corporation	X		X	
Occidental Oil & Gas Corporation	X	X	X	X
Placid Refining Company LLC	X	X		
Portland Pipeline Corporation	X	X	X	X
PPL Interstate Energy Company	X			
Shell Downstream (US & Pipeline)	X	X	X	X
Shell Pipeline Company LP	X	X		
Sunoco Inc	X	X		
Sunoco Logistics Partners	X			
TEPPCO	X			
Total Petrochemicals USA Inc.	X	X		

2006 Survey on Petroleum Industry Occupational Injuries, Illnesses and Fatalities
List of Participants

<u>COMPANY</u>	Type of Data Reported			
	<u>U.S. Company Operations</u>	<u>U.S. Contractors</u>	<u>Non-U.S. Company Operations</u>	<u>Non-U.S. Contractors</u>
U.S. Oil & Refining Company	X			
Valero Refining Company (Louisiana)	X	X		
Wolverine Pipeline	X	X		
Wynnewood Refining Company	X			
Wyoming Pipeline Company	X			



Survey on Petroleum Industry Occupational Injuries, Illnesses and Fatalities for the Year 2006

Company Name: _____

Contact Person: _____

Address: _____

Telephone: _____ Fax: _____

E-mail: _____

This form also includes data for the following subsidiaries and/or affiliates:

_____	_____
_____	_____
_____	_____
_____	_____

Please return your completed survey by February 9, 2007

to:

American Petroleum Institute

Statistics - OII

1220 L Street, NW, Washington, DC 20005-4070

Attn: Jeff Obermiller

Tel: (202) 682-8508 Fax: (202) 962-4730

E-mail: obermiller@api.org

**Survey on Petroleum Industry
Occupational Injuries, Illnesses and Fatalities for the Year 2006
Data Entry Form 1 -- U.S. Operations: Company Employees**

Company: _____

I do not wish to share my individual company data. Please note, if you check this box you **will not** have access to the Full Benchmarking Reports or other companies' Individual Reports for this type of worker. You will **only** have access to **your** report and the Limited Benchmarking Reports.

For each Function enter the sum of cases for both Severity and Type. Each case requires an entry both for Severity and Type			Classify Cases by Severity			Enter Types of Cases		Total OSHA Recordable Cases
			Each case should be entered only once in the column representing the greatest severity			Choose either injury or illness Each case should be entered only in one Column as Injury or Illness		
Function	Average Number of Employees (Optional)	Total Hours Worked (Thousands)	Case Severity			Injury	Illness	Total OSHA Recordable Cases
			Death	Days Away From Work	Job Transfer or Restriction (Optional)	All Injury Cases (Optional)	All Illness Cases (Optional)	
This is where you can find the information for the column above on the OSHA 300 Form			Column (G)	Column (H)	Column (I)	Column (M1)	Sum of Columns (M2) + (M3) + (M4) + (M5)	Sum of Columns (M1) + (M2) + (M3) + (M4) + (M5)
A. UPSTREAM								
1. Offshore Expl & Prodn and Drilling ¹								
2. Onshore Expl & Prodn and Drilling ¹								
3. Gas Processing								
4. Upstream Support Services								
B. DOWNSTREAM								
1. Marketing-Wholesale								
2. Marketing-Retail								
3. Marketing-Not separated ²								
4. Refining ¹								
5. Lubricants/Specialties								
6. Downstream Support Services								
C. PIPELINE								
1. Pipeline-Liquid								
2. Pipeline-Gas								
3. Pipeline-Not separated ³								
D. MARINE								
E. RESEARCH & DEVELOPMENT								
F. SUPPORT SERVICES⁴								

¹ Include Power Generation personnel that support this function.
² Marketing data unable to be separated into Wholesale or Retail functions.
³ Pipeline data unable to be separated into Liquid or Gas functions.
⁴ Not covered under Operating Segments.

SHIFT/EXPOSURE DATA (Optional):

	Offshore E&P and Drilling	Marine
Hours worked or exposure per while on duty		
Number of days on per duty cycle		
Number of days off per duty cycle		

Comments:

**Survey on Petroleum Industry
Occupational Injuries, Illnesses and Fatalities for the Year 2006
Data Entry Form 2 -- U.S. Operations: Contract Workers**

Company: _____

I do not wish to share my individual company data. Please note, if you check this box you **will not** have access to the Full Benchmarking Reports or other companies' Individual Reports for this type of worker. You will **only** have access to **your** report and the Limited Benchmarking Reports.

For each Function enter the sum of cases for both Severity and Type. Each case requires an entry both for Severity and Type			Classify Cases by Severity			Enter Types of Cases		Total OSHA Recordable Cases
			Each case should be entered only once in the column representing the greatest severity			Choose either injury or illness Each case should be entered only in one Column as Injury or Illness		
Function	Average Number of Employees (Optional)	Total Hours Worked (Thousands)	Case Severity			Injury	Illness	Total OSHA Recordable Cases
			Death	Days Away From Work	Job Transfer or Restriction (Optional)	All Injury Cases (Optional)	All Illness Cases (Optional)	
This is where you can find the information for the column above on the OSHA 300 Form			Column (G)	Column (H)	Column (I)	Column (M1)	Sum of Columns (M2) + (M3) + (M4) + (M5)	Sum of Columns (M1) + (M2) + (M3) + (M4) + (M5)
A. UPSTREAM								
1. Offshore Expl & Prodn and Drilling ¹								
2. Onshore Expl & Prodn and Drilling ¹								
3. Gas Processing								
4. Upstream Support Services								
B. DOWNSTREAM								
1. Marketing-Wholesale								
2. Marketing-Retail								
3. Marketing-Not separated ²								
4. Refining ¹								
5. Lubricants/Specialties								
6. Downstream Support Services								
C. PIPELINE								
1. Pipeline-Liquid								
2. Pipeline-Gas								
3. Pipeline-Not separated ³								
D. MARINE								
E. RESEARCH & DEVELOPMENT								
F. SUPPORT SERVICES⁴								

¹ Include Power Generation personnel that support this function.
² Marketing data unable to be separated into Wholesale or Retail functions.
³ Pipeline data unable to be separated into Liquid or Gas functions.
⁴ Not covered under Operating Segments.

SHIFT/EXPOSURE DATA (Optional):

	Offshore E&P and Drilling	Marine
Hours worked or exposure per while on duty		
Number of days on per duty cycle		
Number of days off per duty cycle		

Comments:

**Survey on Petroleum Industry
Occupational Injuries, Illnesses and Fatalities for the Year 2006
Data Entry Form 3 -- Non-U.S. Operations: Company Employees**

Company: _____

I do not wish to share my individual company data. Please note, if you check this box you **will not** have access to the Full Benchmarking Reports or other companies' Individual Reports for this type of worker. You will **only** have access to **your** report and the Limited Benchmarking Reports.

For each Function enter the sum of cases for both Severity and Type. Each case requires an entry both for Severity and Type			Classify Cases by Severity Each case should be entered only once in the column representing the greatest severity			Enter Types of Cases Choose either injury or illness Each case should be entered only in one Column as Injury or Illness		Total OSHA Recordable Cases
Function	Average Number of Employees (Optional)	Total Hours Worked (Thousands)	Case Severity			Injury	Illness	
			Death	Days Away From Work	Job Transfer or Restriction (Optional)	All Injury Cases (Optional)	All Illness Cases (Optional)	
This is where you can find the information for the column above on the OSHA 300 Form			Column (G)	Column (H)	Column (I)	Column (M1)	Sum of Columns (M2) + (M3) + (M4) + (M5)	Sum of Columns (M1) + (M2) + (M3) + (M4) + (M5)
A. UPSTREAM								
1. Offshore Expl & Prodn and Drilling ¹								
2. Onshore Expl & Prodn and Drilling ¹								
3. Gas Processing								
4. Upstream Support Services								
B. DOWNSTREAM								
1. Marketing-Wholesale								
2. Marketing-Retail								
3. Marketing-Not separated ²								
4. Refining ¹								
5. Lubricants/Specialties								
6. Downstream Support Services								
C. PIPELINE								
1. Pipeline-Liquid								
2. Pipeline-Gas								
3. Pipeline-Not separated ³								
D. MARINE								
E. RESEARCH & DEVELOPMENT								
F. SUPPORT SERVICES⁴								

¹ Include Power Generation personnel that support this function.
² Marketing data unable to be separated into Wholesale or Retail functions.
³ Pipeline data unable to be separated into Liquid or Gas functions.
⁴ Not covered under Operating Segments.

SHIFT/EXPOSURE DATA (Optional):

	Offshore E&P and Drilling	Marine
Hours worked or exposure per while on duty		
Number of days on per duty cycle		
Number of days off per duty cycle		

Comments:

**Survey on Petroleum Industry
Occupational Injuries, Illnesses and Fatalities for the Year 2006
Data Entry Form 4 -- Non-U.S. Operations: Contract Workers**

Company: _____

I do not wish to share my individual company data. Please note, if you check this box you will not have access to the Full Benchmarking Reports or other companies' Individual Reports for this type of worker. You will only have access to your report and the Limited Benchmarking Reports.

For each Function enter the sum of cases for both Severity and Type. Each case requires an entry both for Severity and Type			Classify Cases by Severity Each case should be entered only once in the column representing the greatest severity			Enter Types of Cases Choose either injury or illness Each case should be entered only in one Column as Injury or Illness		Total OSHA Recordable Cases
Function	Average Number of Employees (Optional)	Total Hours Worked (Thousands)	Case Severity			Injury	Illness	
			Death	Days Away From Work	Job Transfer or Restriction (Optional)	All Injury Cases (Optional)	All Illness Cases (Optional)	
This is where you can find the information for the column above on the OSHA 300 Form			Column (G)	Column (H)	Column (I)	Column (M1)	Sum of Columns (M2) + (M3) + (M4) + (M5)	Sum of Columns (M1) + (M2) + (M3) + (M4) + (M5)
A. UPSTREAM								
1. Offshore Expl & Prodn and Drilling ¹								
2. Onshore Expl & Prodn and Drilling ¹								
3. Gas Processing								
4. Upstream Support Services								
B. DOWNSTREAM								
1. Marketing-Wholesale								
2. Marketing-Retail								
3. Marketing-Not separated ²								
4. Refining ¹								
5. Lubricants/Specialties								
6. Downstream Support Services								
C. PIPELINE								
1. Pipeline-Liquid								
2. Pipeline-Gas								
3. Pipeline-Not separated ³								
D. MARINE								
E. RESEARCH & DEVELOPMENT								
F. SUPPORT SERVICES⁴								

¹ Include Power Generation personnel that support this function.
² Marketing data unable to be separated into Wholesale or Retail functions.
³ Pipeline data unable to be separated into Liquid or Gas functions.
⁴ Not covered under Operating Segments.

SHIFT/EXPOSURE DATA (Optional):

	Offshore E&P and Drilling	Marine
Hours worked or exposure per while on duty		
Number of days on per duty cycle		
Number of days off per duty cycle		

Comments:

Company Name: _____

**Survey on Petroleum Industry
Occupational Injuries, Illnesses and Fatalities for the Year 2006**

**Data Entry Form 5 -- Occupational Fatal Injury Incident
(Complete one form for each incident with one or more fatalities)**

Part A.

U.S. Operations:
Non U.S. Operations:

1. Date of incident: _____ 2. Number of Fatalities in this incident: _____
3. Sex and age of Victims: _____

4. Function (Enter number of fatalities for each)

Expl & Prodn and Drilling¹:
Gas Processing:
Upstream Support Services:
Marketing -- Wholesale:
Marketing -- Retail:
Marketing -- Not separated²:

Refining¹:
Lubricants/Specialties:
Downstream Support Services:
Pipeline -- Liquid:
Pipeline -- Gas:
Pipeline -- Not separated³:

Marine:
Research & Dev.:
Support Services⁴:

5. Offshore _____ Not offshore _____

6. Occupational Category (Enter number for each)

Admin., Mgmt., Sales, Support:
Foreman, Supervisor:
Engineer/Scientist/Technician:
Process/Equipment Operator:

Drilling/Well Service Operator:
Transportation Operator:
Heavy Equipment Operator:
Service Station Workers:

Maintenance, Craftsman:
Manual Labor:
Other (describe):

7. Specific job title: _____

8. Medical cause of death: _____

9. Type of incident:
- | | | | |
|----------------------|----------------------|----------------------|---------------------|
| <input type="text"/> | Motor Vehicle | <input type="text"/> | Struck by Equipment |
| <input type="text"/> | Other Transportation | <input type="text"/> | Fall |
| <input type="text"/> | Fires and Explosions | <input type="text"/> | Toxic Gas or Liquid |
| <input type="text"/> | Drowning | <input type="text"/> | Electrocution |
| <input type="text"/> | Caught In or Between | <input type="text"/> | Other : |

10. Narrative of Incident. PLEASE REFER TO THE **EXAMPLE NARRATIVE** ON PAGE 3 OF THIS DATA ENTRY FORM FOR AN EXAMPLE OF THE MANNER IN WHICH FATALITY NARRATIVE INFORMATION SHOULD BE PROVIDED.

NOTE: Your company's name will not be disclosed in the annual fatality reports published by API.

¹ Include Power Generation personnel that support this function.
² Marketing data unable to be separated into Wholesale or Retail functions.
³ Pipeline data unable to be separated into Liquid or Gas functions.
⁴ Not covered under Operating Segments.

Company Name: _____

Survey on Petroleum Industry
Occupational Injuries, Illnesses and Fatalities for the Year 2006

Part B. Explanation of Occupational Fatal Injury

11. Function (department) in which accident occurred: _____

12. Occupation of employee killed: _____

13. Explanation of conditions leading up to accident and description of accident

14. What was the exact cause of the accident, and how can such accidents be prevented? Please give sufficient detail to make this information instructive to others.

