



2007 Survey on Petroleum Industry Occupational Injuries, Illnesses, and Fatalities Summary Report: Aggregate Data Only

**As Reported to the
American Petroleum Institute**

Covering Petroleum Operations of Reporting Companies

API Publication 2383
May 2008

Prepared by:

Jeff Obermiller
Statistics Department
American Petroleum Institute
202-682-8508
obermiller@api.org



2007 Survey on Petroleum Industry Occupational Injuries, Illnesses, and Fatalities Summary Report: Aggregate Data Only

**As Reported to the
American Petroleum Institute**

Covering Petroleum Operations of Reporting Companies

API Publication 2383
May 2008

COPYRIGHT NOTICE

All information offered in this report is the sole and exclusive property of the American Petroleum Institute.

You may not reproduce, upload, post, transmit, download, or distribute, resell or otherwise transfer outside of your company without express consent of the American Petroleum Institute.

Copyright©2008 The American Petroleum Institute

SPECIAL NOTES

API publications necessarily address problems of a general nature. With respect to particular circumstances, local, state, and federal laws and regulations should be reviewed.

API is not undertaking to meet the duties of employers, manufacturers, or suppliers to warn and properly train and equip their employees, and others exposed, concerning health and safety risks and precautions, nor undertaking their obligations under local, state, or federal laws.

Information concerning safety and health risks and proper precautions with respect to particular materials and conditions should be obtained from the employer, the manufacturer or supplier of that material, or the material safety data sheet.

Nothing contained in any API publication is to be construed as granting any right, by implication or otherwise, for the manufacture, sale, or use of any method, apparatus, or product covered by letters patent. Neither should anything contained in the publication be construed as insuring anyone against liability for infringement of letters patent.

Generally, API standards are reviewed and revised, reaffirmed, or withdrawn at least every five years. Sometimes a one-time extension of up to two years will be added to this review cycle. This publication will no longer be in effect five years after its publication date as an operative API standard or, where an extension has been granted, upon republication. Status of the publication can be ascertained from the API Authoring Department, telephone (202) 682-8000. A catalog of API publications and materials is published annually and updated quarterly by API, 1220 L Street, NW, Washington, D.C. 20005.

This document was produced under API standardization procedures that ensure appropriate notification and participation in the developmental process and is designed as an API standard. Questions concerning the interpretation of the content of this standard or comments and questions concerning the procedures under which this standard was developed should be directed in writing to the director of the Regulatory and Scientific Affairs Department (shown on the title page of this document), American Petroleum Institute, 1220 L Street, NW, Washington, D.C. 20005. Requests for permission to reproduce or translate all or any part of the material published herein should also be addressed to the director.

Every effort has been made by the Institute to assure the accuracy and reliability of the data contained in this document; however, the Institute makes no representation, warranty or guarantee in connection with this publication and hereby expressly disclaims any liability or responsibility for loss or damage resulting from its use or for the violation of any federal, state, or municipal regulation with which this publication may conflict.

API standards are published to facilitate the broad availability of proven, sound engineering and operating practices. These standards are not intended to obviate the need for applying sound engineering judgment regarding when and where these standards should be utilized. The formulation and publication of API standards is not intended in any way to inhibit anyone from using any other practices.

Any manufacturer marking equipment or materials in conformance with the marking requirements of an API standard is solely responsible for complying with all the applicable requirements of that standard. API does not represent, warrant, or guarantee that such products do in fact conform to the applicable API standard.

Table of Contents

	Page
Introduction	1
Background	1
Summary	2
Tables	
UNITED STATES OPERATIONS	
Company Employees.....	6
Contract Workers	7
NON-U.S. OPERATIONS	
Company Employees.....	8
Contract Workers	9
SHIFT EXPOSURE INFORMATION	
Offshore E&P&Drilling	13
Marine	13
FATALITIES	
Summary	14
Narrative of Fatalities	15
APPENDICES	
Appendix A: List of Participants	
Appendix B: Data Collection Forms	

INTRODUCTION

The Survey on Petroleum Industry Occupational Injuries, Illnesses and Fatalities (OII) is conducted annually. Participation is voluntary and the number of participating companies varies from year to year. Therefore, exercise caution when using this data to characterize the performance of the industry as a whole.

The Survey's results are documented in the *2007 Benchmarking Survey of Occupational Injuries, Illnesses, and Fatalities in Petroleum Industry: Report to Participants*. This Report is only available on *The Occupational Injuries, Illnesses and Fatalities Reporting System website* (<http://oii.api.org>). Access to this report is limited to companies that gave API permission to share their 2007 data.

Participants are asked to submit data according to the Bureau of Labor Statistics (BLS) guidelines. Therefore, this report provides incidence rates per 200,000 hours worked on the same basis as those reported by BLS.

BACKGROUND

API has been collecting data regarding workplace injuries, illnesses and fatalities in *The Survey on Occupational Injuries, Illnesses and Fatalities (OII)* since 1931. Prior to the 1999 survey, companies submitted employee data for their U.S. operations only. In 2000, API expanded the scope of the *OII* and began collecting employee and contract worker data for operations both inside and outside of the U.S.

A second change introduced in 2000 gave participants the ability to submit their data electronically over the Internet using *The Occupational Injuries, Illnesses and Fatalities Reporting System* at <http://oii.api.org/>. Features of this online database include automatic data checks, online instructions, and reports. In addition, for companies willing to share their data have the ability to produce customized benchmarking reports.

While conducting the 2001 survey, API learned that a number of companies no longer track certain data. Consequently, it was decided to make those data fields optional in the 2002 survey. These optional data fields are "The Average Number of Employees", "Job Transfer or Restriction", "All Injury Cases" and "All Illness Cases".

The Occupational Injuries, Illnesses, and Fatalities Reporting System generates two broad categories of online reports for each type of worker—Full Benchmarking and Limited Benchmarking. Companies submitting data for both required and optional fields as well as giving API permission to share their data with other participants have access to Full Benchmark reports. Companies that only submit data for required fields only have access to Limited Benchmarking reports.

SUMMARY

U.S. Operations: Company Employees

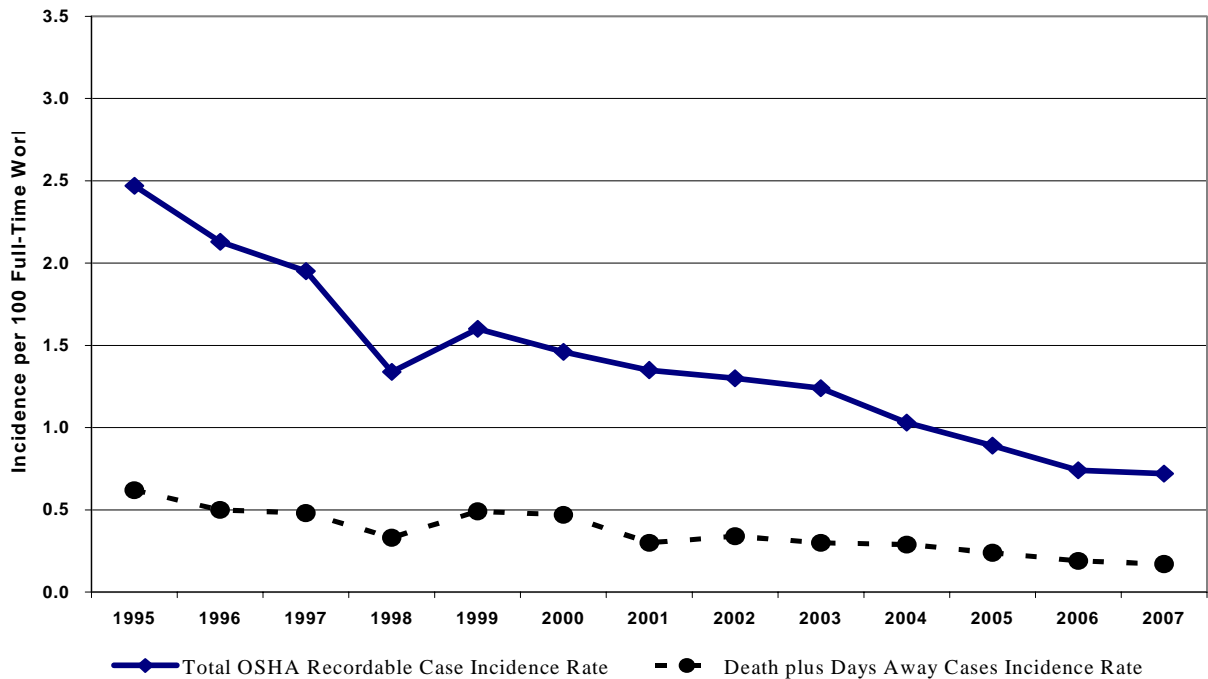
2007 data pertaining to U.S. occupational injuries, illnesses and fatalities for an employer's own employees were submitted to the American Petroleum Institute (API) by forty-two oil and gas companies and their subsidiaries, employing persons with a total work experience of 343 million hours. In 2006, fifty-one companies reported 358 million hours.

In 2007, the *Total OSHA Recordable Case Incidence Rate* reported was 0.72, compared to 0.74 for 2006. This rate is the number of total recordable cases per 200,000 hours worked, or approximately the number of cases per 100 full-time workers per year.

The *Death Plus Days Away Incidence Rate* reported for 2007 was 0.17 per 200,000 hours worked—or one case for every 588 employees, compared to 0.19 in 2006—or one case for every 526 employees.

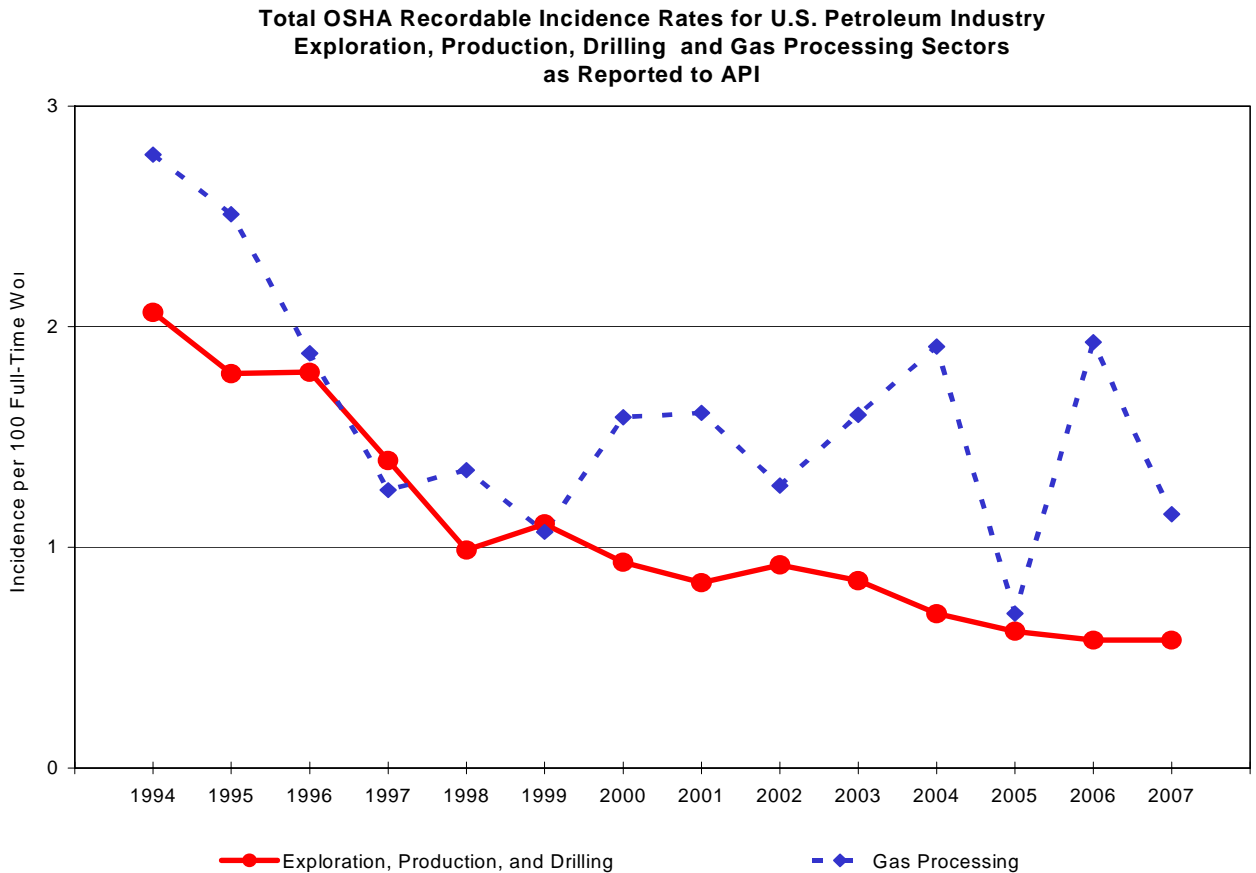
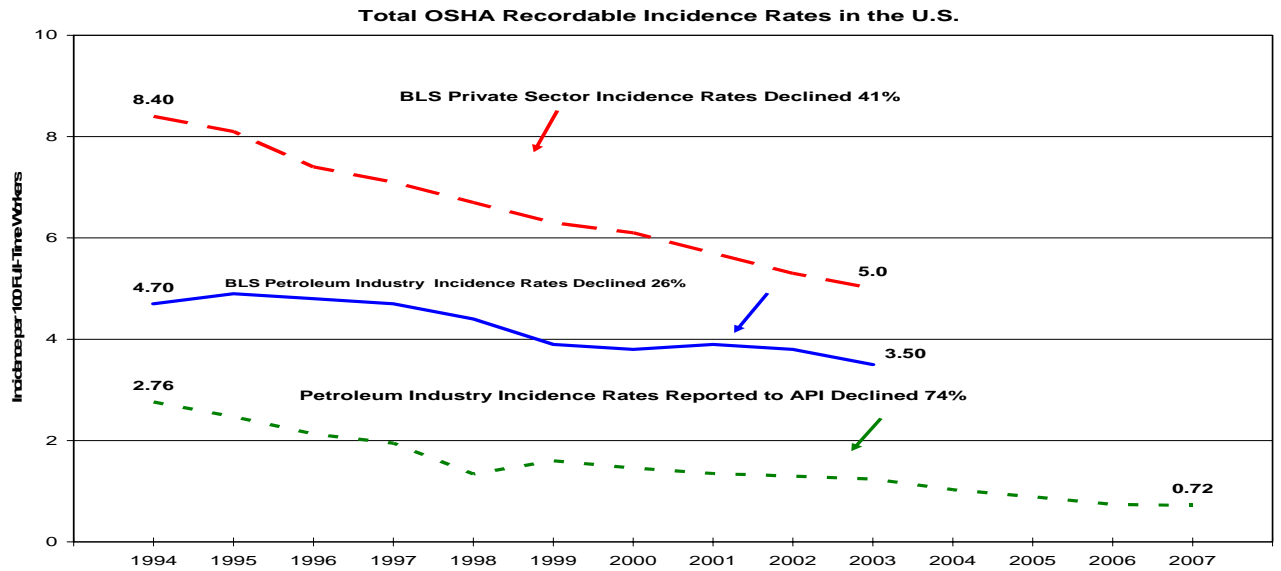
Since 1995, the reported *Total OSHA Recordable Case Incidence Rate* and *Death plus Days Away Incidence Rate* have improved an average of 9.2 and 9.1 percent per year, respectively (see the figure below).

Reported U.S. Occupational Injuries, Illnesses, and Fatalities in the Petroleum Industry Company Employees

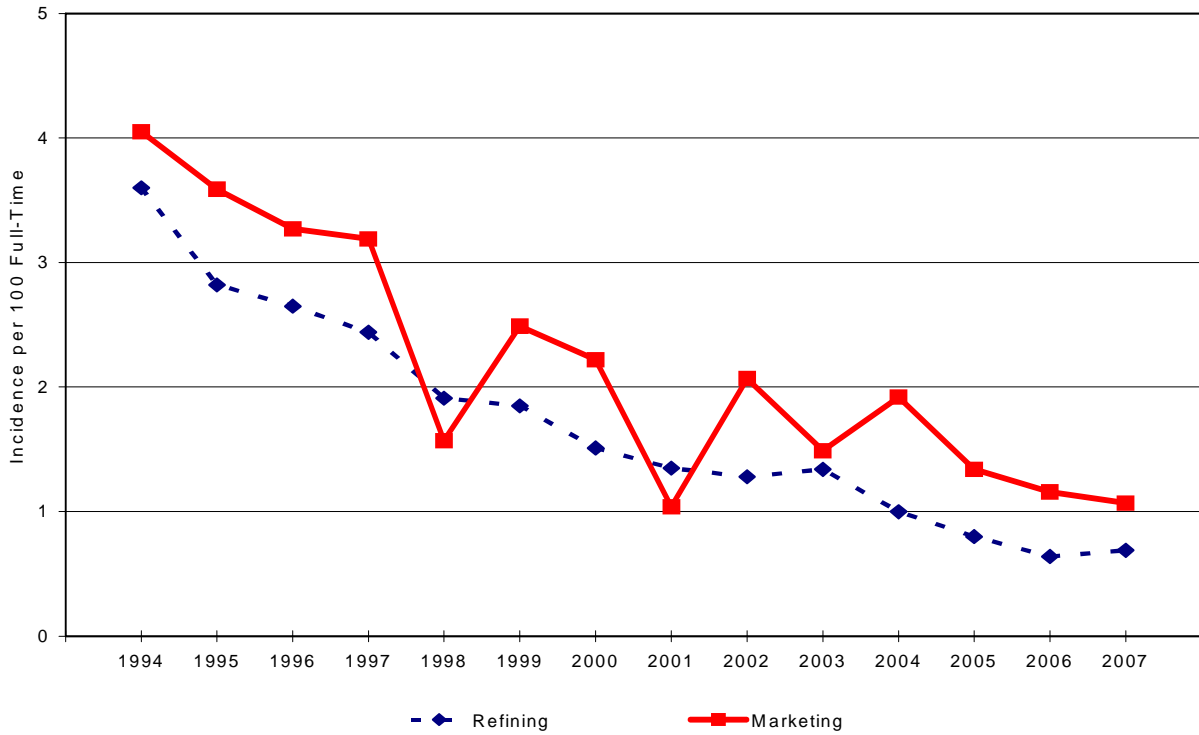


Significant differences exist among companies regarding return-to-work policies and practices. Therefore, use of the *Death plus Days Away Incidence Rates* alone to judge and compare company safety performance is not recommended.

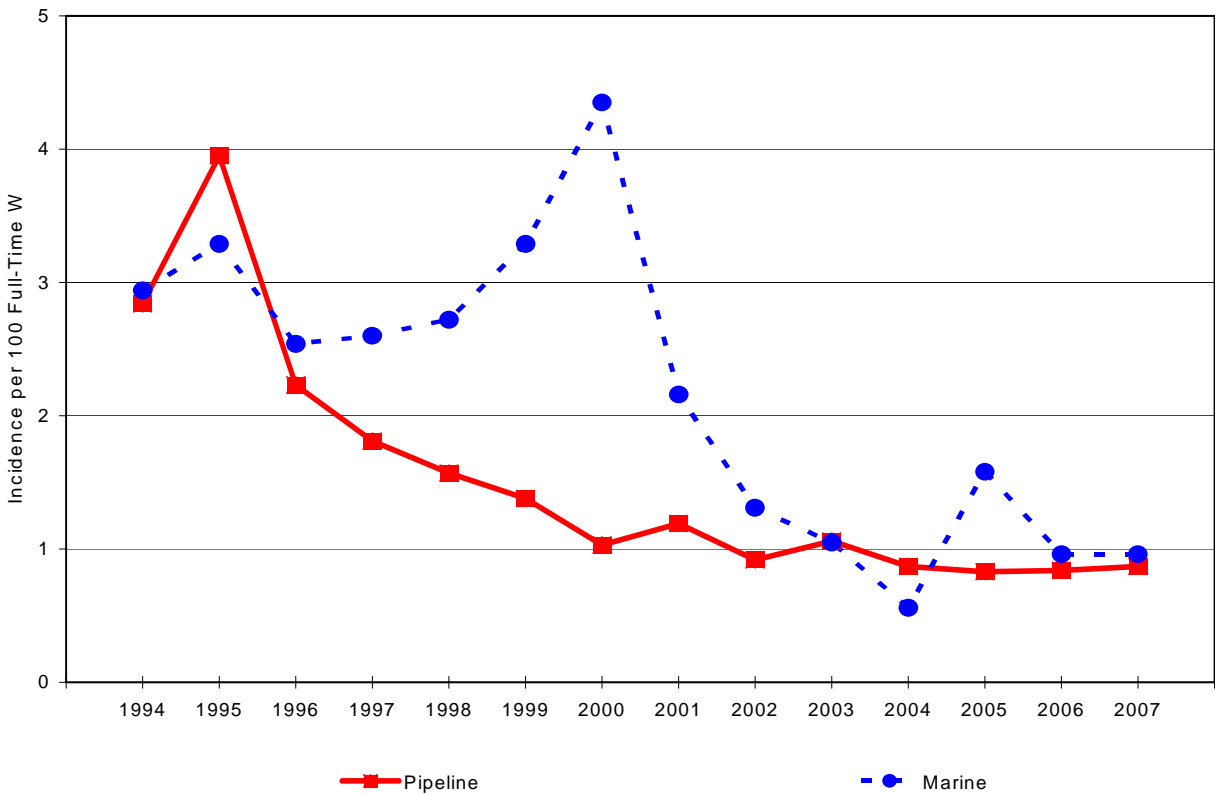
The total OSHA recordable incidence rate as reported to API has declined by more than half over the past fourteen years. The following graphs show the fourteen-year trend for selected U.S. petroleum industry sectors.



**Total OSHA Recordable Incidence Rates for U.S. Petroleum Industry
Marketing and Refining Sectors as Reported to API**



**Total OSHA Recordable Incidence Rates for U.S. Petroleum Industry
Pipeline and Marine Sectors as Reported to API**



U.S. Operations: Contract Workers

In 2007, twenty-nine oil and gas companies and their subsidiaries submitted contract worker data for their U.S. operations. These workers provided 369 million hours of service to these companies. The *Total OSHA Recordable Case Incidence Rate* reported for these contract workers was 0.95. The *Death plus Days Away Incidence Rate* reported for this group of workers was 0.21 per 200,000 hours worked—or one case for every 476 workers.

Non-U.S. Operations: Company Employees

Eleven companies reported non-U.S. employee data. During 2007, these employees had a total work experience of 363 million hours. For this group, the reported *Total OSHA Recordable Case Incidence Rate* was 0.28.

Their *Death plus Days Away Incidence Rate* was 0.07 per 200,000 hours worked—or one case for every 1,429 employees.

Non-U.S. Operations: Contract Workers

Ten companies reported data for non-U.S. contract workers. In 2007, this category of worker performed a total of 731 million hours in their non-U.S. operations. The *Total OSHA Recordable Case Incidence Rate* reported for these contract workers was 0.44. The *Death plus Days Away Incidence Rate* reported for this group of workers was 0.11 per 200,000 hours worked—or one case for every 909 workers

Survey on Petroleum Industry Occupational Injuries, Illnesses and Fatalities
Limited Benchmarking: All Sharing Companies
U.S. Operations: Company Employees for 2007
Totals by Function

Function	Total Hours Worked (Thousands)	OSHA Recordable Cases Classified by Severity		Total OSHA Recordable Cases	Incidence Rates*		
		Cases of Death	Cases of Days Away From Work		Incidence Rate Total OSHA Recordable Cases	Death plus Days Away From Work Cases	Days Away From Work Cases
Total U.S. Operations: Company Employees 2007	343,445	7	277	1,237	.72	.17	.16
A . UPSTREAM							
Offshore Expl & Prodn & Drilling ¹	11,761	0	2	25	.43	.03	.03
Onshore Expl & Prodn & Drilling ¹	47,303	0	30	147	.62	.13	.13
Expl & Prodn & Drilling Subtotal	59,064	0	32	172	.58	.11	.11
Gas Processing	5,550	0	10	32	1.15	.36	.36
Upstream Support Services	8,913	0	2	7	.16	.04	.04
Upstream Subtotal	73,527	0	44	211	.57	.12	.12
B . DOWNSTREAM							
Marketing-Wholesale	9,671	1	6	39	.81	.14	.12
Marketing-Retail	38,884	0	98	287	1.48	.50	.50
Marketing-Not separated ²	41,780	0	14	157	.75	.07	.07
Marketing Subtotal	90,335	1	118	483	1.07	.26	.26
Refining ¹	87,624	3	62	301	.69	.15	.14
Lubricants/Specialties	8,165	0	5	20	.49	.12	.12
Downstream Support Services	13,220	0	2	18	.27	.03	.03
Downstream Subtotal	199,344	4	187	822	.82	.19	.19
C . PIPELINE							
Pipeline-Liquid	13,508	2	17	78	1.15	.28	.25
Pipeline-Gas	20	0	0	0	0.00	0.00	0.00
Pipeline-Not separated ⁴	12,015	0	6	33	.55	.10	.10
Pipeline Subtotal	25,543	2	23	111	.87	.20	.18
MARINE	3,560	0	4	17	.96	.22	.22
RESEARCH & DEV	8,342	0	2	13	.31	.05	.05
SUPPORT SERVICES	33,129	1	17	63	.38	.11	.10

- 1 Include Power Generation personnel that support this function.
- 2 Marketing data unable to be separated into Wholesale or Retail functions.
- 3 Subsidiary data is not included in this table.
- 4 Pipeline data unable to be separated into Liquid or Gas functions.
- 5 Not covered under Operating Segments.

*API calculated fields: Total OSHA Recordable Case Incidence Rate = Total OSHA Recordable Cases multiplied by 200 divided by the hours worked (in thousands)
Death plus Days Away From Work Cases Incidence Rate = Death plus Days Away From Work Cases multiplied by 200 divided by the hours worked (in thousands)
Days Away From Work Cases Incidence Rate = Days Away From Work Cases multiplied by 200 divided by the hours worked (in thousands)

Survey on Petroleum Industry Occupational Injuries, Illnesses and Fatalities
Limited Benchmarking: All Sharing Companies
U.S. Operations: Contract Workers for 2007
Totals by Function

Function	Total Hours Worked (Thousands)	OSHA Recordable Cases Classified by Severity		Total OSHA Recordable Cases	Incidence Rates*		
		Cases of Death	Cases of Days Away From Work		Incidence Rate Total OSHA Recordable Cases	Death plus Days Away From Work Cases	Days Away From Work Cases
Total U.S. Operations: Contract Workers 2007	369,076	8	374	1,750	.95	.21	.20
A . UPSTREAM							
Offshore Expl & Prodn & Drilling ¹	36,726	2	13	118	.64	.08	.07
Onshore Expl & Prodn & Drilling ¹	135,001	5	264	1,044	1.55	.40	.39
Expl & Prodn & Drilling Subtotal	171,727	7	277	1,162	1.35	.33	.32
Gas Processing	6,324	0	7	49	1.55	.22	.22
Upstream Support Services	1,195	0	0	1	.17	0.00	0.00
Upstream Subtotal	179,246	7	284	1,212	1.35	.32	.32
B . DOWNSTREAM							
Marketing-Wholesale	3,988	0	3	19	.95	.15	.15
Marketing-Retail	6,982	0	11	20	.57	.32	.32
Marketing-Not separated ²	9,210	0	3	25	.54	.07	.07
Marketing Subtotal	20,180	0	17	64	.63	.17	.17
Refining ¹	127,356	1	43	314	.49	.07	.07
Lubricants/Specialties	1,795	0	1	3	.33	.11	.11
Downstream Support Services	4,701	0	3	10	.43	.13	.13
Downstream_Subtotal	154,032	1	64	391	.51	.08	.08
C . PIPELINE							
Pipeline-Liquid	9,170	0	8	31	.68	.17	.17
Pipeline-Gas	0	0	0	0	0.00	0.00	0.00
Pipeline-Not separated ⁴	10,677	0	9	50	.94	.17	.17
Pipeline Subtotal	19,847	0	17	81	.82	.17	.17
MARINE	784	0	0	2	.51	0.00	0.00
RESEARCH & DEV	1,168	0	1	1	.17	.17	.17
SUPPORT SERVICES	13,999	0	8	63	.90	.11	.11

- 1 Include Power Generation personnel that support this function.
2 Marketing data unable to be separated into Wholesale or Retail functions.
3 Subsidiary data is not included in this table.
4 Pipeline data unable to be separated into Liquid or Gas functions.
5 Not covered under Operating Segments.

*API calculated fields: Total OSHA Recordable Case Incidence Rate = Total OSHA Recordable Cases multiplied by 200 divided by the hours worked (in thousands)
Death plus Days Away From Work Cases Incidence Rate = Death plus Days Away From Work Cases multiplied by 200 divided by the hours worked (in thousands)
Days Away From Work Cases Incidence Rate = Days Away From Work Cases multiplied by 200 divided by the hours worked (in thousands)

Survey on Petroleum Industry Occupational Injuries, Illnesses and Fatalities
Limited Benchmarking: All Sharing Companies
Non-U.S. Operations: Company Employees for 2007
Totals by Function

Function	Total Hours Worked (Thousands)	OSHA Recordable Cases Classified by Severity		Total OSHA Recordable Cases	Incidence Rates*		
		Cases of Death	Cases of Days Away From Work		Incidence Rate Total OSHA Recordable Cases	Death plus Days Away From Work Cases	Days Away From Work Cases
Total Non-U.S. Operations: Company Employees 2007	362,870	5	113	509	.28	.07	.06
A . UPSTREAM							
Offshore Expl & Prodn & Drilling ¹	43,377	1	8	58	.27	.04	.04
Onshore Expl & Prodn & Drilling ¹	82,023	0	25	98	.24	.06	.06
Expl & Prodn & Drilling Subtotal	125,400	1	33	156	.25	.05	.05
Gas Processing	1,425	0	1	12	1.68	.14	.14
Upstream Support Services	1,737	0	0	0	0.00	0.00	0.00
Upstream Subtotal	128,562	1	34	168	.26	.05	.05
B . DOWNSTREAM							
Marketing-Wholesale	11,894	0	3	6	.10	.05	.05
Marketing-Retail	7,423	0	13	16	.43	.35	.35
Marketing-Not separated ²	107,247	2	33	174	.32	.07	.06
Marketing Subtotal	126,564	2	49	196	.31	.08	.08
Refining ¹	33,564	0	17	70	.42	.10	.10
Lubricants/Specialties	31,748	1	3	21	.13	.03	.02
Downstream Support Services	971	0	0	0	0.00	0.00	0.00
Downstream_Subtotal	192,847	3	69	287	.30	.07	.07
C . PIPELINE							
Pipeline-Liquid	22	0	0	0	0.00	0.00	0.00
Pipeline-Gas	0	0	0	0	0.00	0.00	0.00
Pipeline-Not separated ⁴	0	0	0	0	0.00	0.00	0.00
Pipeline Subtotal	22	0	0	0	0.00	0.00	0.00
MARINE	19,751	1	7	30	.30	.08	.07
RESEARCH & DEV	605	0	0	1	.33	0.00	0.00
SUPPORT SERVICES	21,083	0	3	23	.22	.03	.03

- 1 Include Power Generation personnel that support this function.
2 Marketing data unable to be separated into Wholesale or Retail functions.
3 Subsidiary data is not included in this table.
4 Pipeline data unable to be separated into Liquid or Gas functions.
5 Not covered under Operating Segments.

*API calculated fields: Total OSHA Recordable Case Incidence Rate = Total OSHA Recordable Cases multiplied by 200 divided by the hours worked (in thousands)
Death plus Days Away From Work Cases Incidence Rate = Death plus Days Away From Work Cases multiplied by 200 divided by the hours worked (in thousands)
Days Away From Work Cases Incidence Rate = Days Away From Work Cases multiplied by 200 divided by the hours worked (in thousands)

Survey on Petroleum Industry Occupational Injuries, Illnesses and Fatalities
Limited Benchmarking: All Sharing Companies
Non-U.S. Operations: Contract Workers for 2007
Totals by Function

Function	Total Hours Worked (Thousands)	OSHA Recordable Cases Classified by Severity		Total OSHA Recordable Cases	Incidence Rates*		
		Cases of Death	Cases of Days Away From Work		Incidence Rate Total OSHA Recordable Cases	Death plus Days Away From Work Cases	Days Away From Work Cases
Total Non-U.S. Operations: Contract Workers 2007	730,945	26	370	1,592	.44	.11	.10
A . UPSTREAM							
Offshore Expl & Prodn & Drilling ¹	186,453	10	72	497	.53	.09	.08
Onshore Expl & Prodn & Drilling ¹	352,481	9	157	669	.38	.09	.09
Expl & Prodn & Drilling Subtotal	538,934	19	229	1,166	.43	.09	.08
Gas Processing	2,334	0	2	12	1.03	.17	.17
Upstream Support Services	4,704	0	0	10	.43	0.00	0.00
Upstream Subtotal	545,972	19	231	1,188	.44	.09	.08
B . DOWNSTREAM							
Marketing-Wholesale	20,248	2	13	38	.38	.15	.13
Marketing-Retail	7,213	0	9	12	.33	.25	.25
Marketing-Not separated ²	76,332	2	65	135	.35	.18	.17
Marketing Subtotal	103,793	4	87	185	.36	.18	.17
Refining ¹	47,830	3	37	165	.69	.17	.15
Lubricants/Specialties	18,426	0	13	36	.39	.14	.14
Downstream Support Services	1,005	0	0	0	0.00	0.00	0.00
Downstream Subtotal	171,054	7	137	386	.45	.17	.16
C . PIPELINE							
Pipeline-Liquid	24	0	0	0	0.00	0.00	0.00
Pipeline-Gas	0	0	0	0	0.00	0.00	0.00
Pipeline-Not separated ⁴	0	0	0	0	0.00	0.00	0.00
Pipeline Subtotal	24	0	0	0	0.00	0.00	0.00
MARINE	3,260	0	0	4	.25	0.00	0.00
RESEARCH & DEV	77	0	0	0	0.00	0.00	0.00
SUPPORT SERVICES	10,558	0	2	14	.27	.04	.04

- 1 Include Power Generation personnel that support this function.
- 2 Marketing data unable to be separated into Wholesale or Retail functions.
- 3 Subsidiary data is not included in this table.
- 4 Pipeline data unable to be separated into Liquid or Gas functions.
- 5 Not covered under Operating Segments.

*API calculated fields: Total OSHA Recordable Case Incidence Rate = Total OSHA Recordable Cases multiplied by 200 divided by the hours worked (in thousands)
Death plus Days Away From Work Cases Incidence Rate = Death plus Days Away From Work Cases multiplied by 200 divided by the hours worked (in thousands)
Days Away From Work Cases Incidence Rate = Days Away From Work Cases multiplied by 200 divided by the hours worked (in thousands)

Page Intentionally Blank

2007 Benchmarking Survey of Occupational Injuries, Illness, and Fatalities in the Petroleum Industry: Report to Participants
Shift Exposure Information

Offshore Exploration & Production and Drilling

<u>U.S. OPERATIONS</u>	Hours Worked or Exposure Hours per Day While on Duty	Duty Cycle	
		Days On	Days Off
		<hr/>	
Company Employees			
Anadarko Petroleum Corporation	12	14	14
BP	12		
Chevron Corporation	12		
ConocoPhillips Inc	12		
Hess Corporation	12	7	7
Marathon Oil Company	12	7	7
Contractors			
BP	12		
Chevron Corporation	12		
ConocoPhillips Inc	12		
Marathon Oil Company	12	7	7
NON-U.S. OPERATIONS			
Company Employees			
BP	12		
Chevron Corporation	12		
ConocoPhillips Inc	12		
Hess Corporation	12	7	7
Marathon Oil Company	12	14	14
Occidental Oil & Gas Corporation	12	28	28
Contractors			
BP	12		
Chevron Corporation	12		
ConocoPhillips Inc	12		
Marathon Oil Company	12	14	14
Occidental Oil & Gas Corporation	12	28	28

2007 Benchmarking Survey of Occupational Injuries, Illness, and Fatalities in the Petroleum Industry: Report to Participants
Shift Exposure Information

Marine

<u>U.S. OPERATIONS</u>	Hours Worked or Exposure Hours per Day While on Duty	Duty Cycle	
		Days On	Days Off
		<hr/>	
Company Employees			
ConocoPhillips Inc	24	30	
Contractors			
ConocoPhillips Inc	24	30	
NON-U.S. OPERATIONS			
Company Employees			
Amerada Hess Corporation	12	30	30
Chevron Corporation	12		
ConocoPhillips Inc	24	30	
Hess Corporation	12	30	30
Contractors			
Chevron Corporation	12		
ConocoPhillips Inc	24	30	
Marathon Oil Company	12	28	28

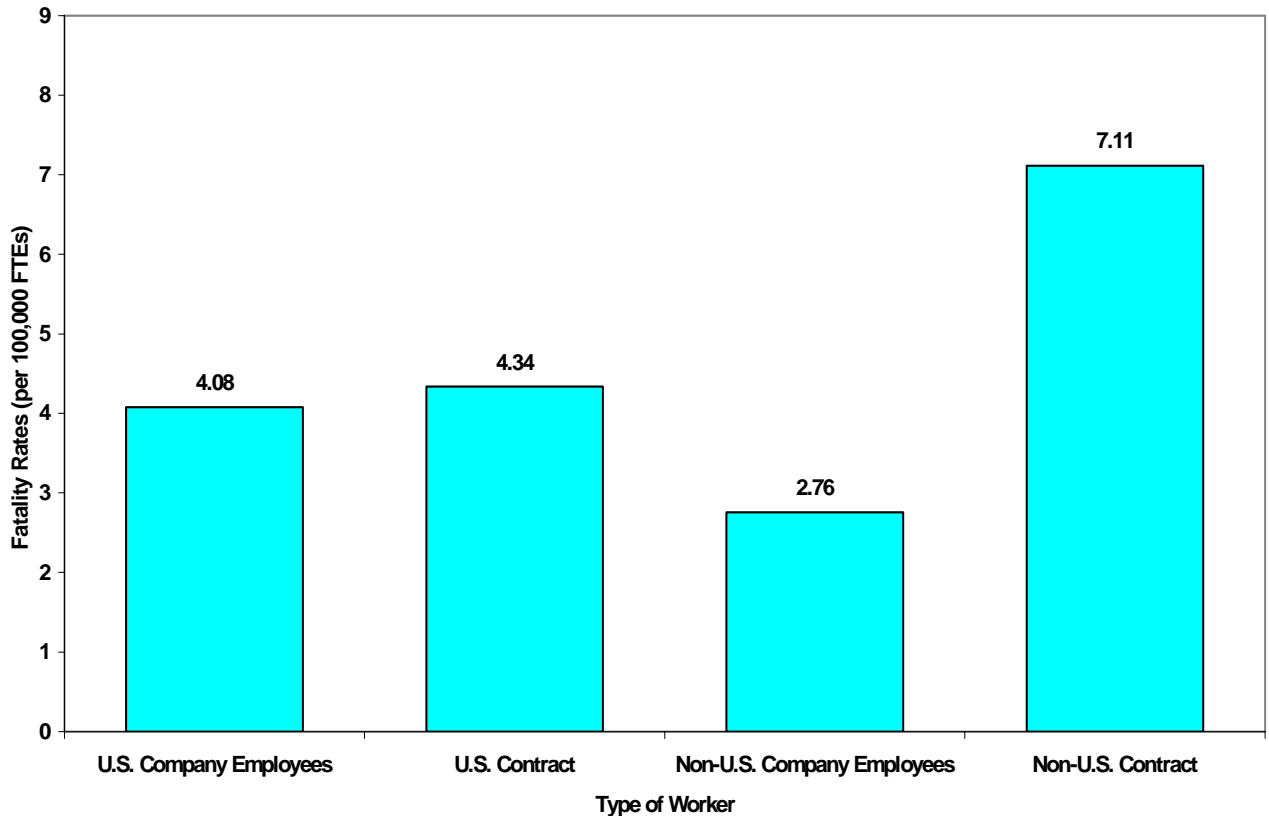
2007 Summary of Fatal Injuries in the Petroleum Industry As Reported to the American Petroleum Institute

In 2007, participants reported fifteen fatal accidents for their U.S. operations. Seven fatalities occurred among company employees and eight among contract workers. For company employees, this is equivalent to one fatality per 49 million hours worked or 4.08 fatalities per 100,000 workers. Comparatively, for contract workers it is the equivalent of one fatality per 46 million hours worked or 4.34 fatalities per 100,000 contract workers.

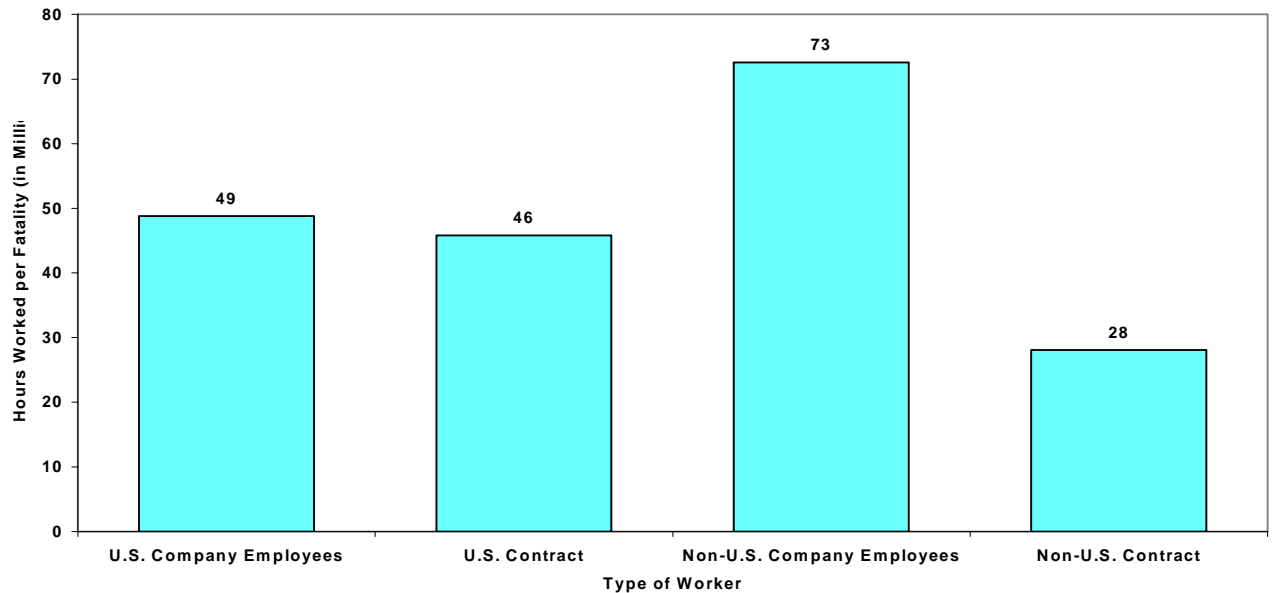
Participants reported thirty-one fatal accidents in their operations outside of the U.S. During 2007, five company employees and twenty-six contractors died providing service in operations outside the U.S. For company employees, this is equivalent to one fatality per 73 million hours worked or 2.76 fatalities per 100,000 employees. Comparatively, contractors experienced one fatality per 28 million hours worked or 7.11 fatalities per 100,000 workers.

The following graphs compare fatalities between the four categories of workers.

2007
Occupational Fatality Rates in the Petroleum Industry
as Reported to API



2007
Number of Hours Worked per Occupational Fatality
in the Petroleum Industry as Reported to API



Narratives of Fatal Incidents for Company Operations

API has published information provided by companies on fatal accidents in the petroleum industry since 1933. Companies are asked to describe each incident that occurred within company operations.

In 2007, nine companies reported experiencing forty-six fatalities. One of those companies submitted detailed information about the circumstances surrounding five of these fatalities. This brief narrative is intended to provide information that could be used to avoid the occurrence of similar accidents in the future.

NON-U.S. OPERATIONS: COMPANY EMPLOYEES

Marketing

January 19, 2007 – Employee was fatally shot by an unknown perpetrator at the BP Dispatch office at Engen, Langlaag.

February 6, 2007 – Fatal shooting of BP employee and two third party persons outside Bethal Police Station.

Marine

January 27, 2007 – ETO fatally injured while undertaking maintenance on an elevator.

NON-U.S. OPERATIONS: CONTRACT WORKERS

Onshore Exploration & Production and Drilling

April 28, 2007 - Acosco driver fatality.

September 28, 2007 – Fatality due to fire extinguisher failure.

APPENDICES

Page Intentionally Blank

2007 Survey on Petroleum Industry Occupational Injuries, Illnesses and Fatalities
List of Participants

<u>COMPANY</u>	Type of Data Reported			
	<u>U.S. Company Operations</u>	<u>U.S. Contractors</u>	<u>Non-U.S. Company Operations</u>	<u>Non-U.S. Contractors</u>
Alyeska Pipeline Service Company	X	X		
Anadarko Petroleum Corporation	X	X	X	X
BP	X	X	X	X
BP Pipelines (North America) Inc	X	X		
Buckeye Pipe Line Company	X			
Chevron Corporation	X	X	X	X
Citgo Petroleum Corporation	X	X		
Citgo Pipeline Company	X	X		
Colonial Pipeline Company	X	X		
ConocoPhillips Inc	X	X	X	X
Cross Oil Refining & Marketing	X			
Devon Energy Corporation	X	X	X	X
El Paso Exploration & Production	X			
Enbridge (U.S.) Inc	X			
Encana Oil & Gas (USA) Inc.	X	X		
Equistar Pipelines	X	X		
Explorer Pipeline Company	X	X		
ExxonMobil Downstream	X	X	X	X
ExxonMobil Pipeline Co	X	X		
ExxonMobil Upstream	X	X	X	X
Genesis Energy	X			
Giant Refining Co – Bloomfield	X			
Hess Corporation	X		X	
Kinder Morgan Energy Partners	X			
Koch Pipeline	X	X		
Loop LLC	X	X		
Magellan Midstream Partners LP	X			
Marathon Oil Company	X	X	X	X
Marathon Petroleum	X	X		
Marathon Pipeline Company	X	X		
Motiva Enterprises LLC	X	X		
Occidental Oil & Gas Corporation	X	X	X	X
Portland Pipeline Corporation	X	X	X	X
PPL Interstate Energy Company	X			
Shell Downstream (US & Pipeline)	X	X		
Shell Pipeline Company LP	X	X		
Sunoco Inc	X	X		
Sunoco Logistics Partners	X			
TEPPCO	X			
Valero Refining Company – Louisiana	X	X		
Wolverine Pipeline	X	X		
Wynnewood Refining Company	X			



**Survey on Petroleum Industry
Occupational Injuries, Illnesses and Fatalities for the Year 2007**

Company Name: _____

Contact Person: _____

Address: _____

Telephone: _____ Fax: _____

E-mail: _____

This form also includes data for the following subsidiaries and/or affiliates:

_____	_____
_____	_____
_____	_____
_____	_____

Please return your completed survey by February 11, 2008
to:
American Petroleum Institute
Statistics - OII
1220 L Street, NW, Washington, DC 20005-4070
Attn: Jeff Obermiller
Tel: (202) 682-8508 Fax: (202) 962-4730
E-mail: obermiller@api.org

**Survey on Petroleum Industry
Occupational Injuries, Illnesses and Fatalities for the Year 2007
Data Entry Form 1 -- U.S. Operations: Company Employees**

Company: _____

I do not wish to share my individual company data. Please note, if you check this box you will not have access to the Full Benchmarking Reports or other companies' Individual Reports for this type of worker. You will only have access to your report and the Limited Benchmarking Reports.

For each Function enter the sum of cases for both Severity and Type. Each case requires an entry both for Severity and Type			Classify Cases by Severity Each case should be entered only once in the column representing the greatest severity			Enter Types of Cases Choose either injury or illness Each case should be entered only in one Column as Injury or Illness		Total OSHA Recordable Cases
Function	Average Number of Employees (Optional)	Total Hours Worked (Thousands)	Case Severity			Injury	Illness	
			Death	Days Away From Work	Job Transfer or Restriction (Optional)	All Injury Cases (Optional)	All Illness Cases (Optional)	
This is where you can find the information for the column above on the OSHA 300 Form			Column (G)	Column (H)	Column (I)	Column (M1)	Sum of Columns (M2) + (M3) + (M4) + (M5)	Sum of Columns (M1) + (M2) + (M3) + (M4) + (M5)
A. UPSTREAM								
1. Offshore Expl & Prodn and Drilling ¹								
2. Onshore Expl & Prodn and Drilling ¹								
3. Gas Processing								
4. Upstream Support Services								
B. DOWNSTREAM								
1. Marketing-Wholesale								
2. Marketing-Retail								
3. Marketing-Not separated ²								
4. Refining ¹								
5. Lubricants/Specialties								
6. Downstream Support Services								
C. PIPELINE								
1. Pipeline-Liquid								
2. Pipeline-Gas								
3. Pipeline-Not separated ³								
D. MARINE								
E. RESEARCH & DEVELOPMENT								
F. SUPPORT SERVICES⁴								

¹ Include Power Generation personnel that support this function.
² Marketing data unable to be separated into Wholesale or Retail functions.
³ Pipeline data unable to be separated into Liquid or Gas functions.
⁴ Not covered under Operating Segments.

SHIFT/EXPOSURE DATA (Optional):

	Offshore E&P and Drilling	Marine
Hours worked or exposure per while on duty		
Number of days on per duty cycle		
Number of days off per duty cycle		

Comments:

**Survey on Petroleum Industry
Occupational Injuries, Illnesses and Fatalities for the Year 2007
Data Entry Form 2 -- U.S. Operations: Contract Workers**

Company: _____

I do not wish to share my individual company data. Please note, if you check this box you will not have access to the Full Benchmarking Reports or other companies' Individual Reports for this type of worker. You will only have access to your report and the Limited Benchmarking Reports.

For each Function enter the sum of cases for both Severity and Type. Each case requires an entry both for Severity and Type			Classify Cases by Severity Each case should be entered only once in the column representing the greatest severity			Enter Types of Cases Choose either injury or illness Each case should be entered only in one Column as Injury or Illness		Total OSHA Recordable Cases
Function	Average Number of Employees (Optional)	Total Hours Worked (Thousands)	Case Severity			Injury	Illness	
			Death	Days Away From Work	Job Transfer or Restriction (Optional)	All Injury Cases (Optional)	All Illness Cases (Optional)	
This is where you can find the information for the column above on the OSHA 300 Form			Column (G)	Column (H)	Column (I)	Column (M1)	Sum of Columns (M2) + (M3) + (M4) + (M5)	Sum of Columns (M1) + (M2) + (M3) + (M4) + (M5)
A. UPSTREAM								
1. Offshore Expl & Prodn and Drilling ¹								
2. Onshore Expl & Prodn and Drilling ¹								
3. Gas Processing								
4. Upstream Support Services								
B. DOWNSTREAM								
1. Marketing-Wholesale								
2. Marketing-Retail								
3. Marketing-Not separated ²								
4. Refining ¹								
5. Lubricants/Specialties								
6. Downstream Support Services								
C. PIPELINE								
1. Pipeline-Liquid								
2. Pipeline-Gas								
3. Pipeline-Not separated ³								
D. MARINE								
E. RESEARCH & DEVELOPMENT								
F. SUPPORT SERVICES⁴								

¹ Include Power Generation personnel that support this function.
² Marketing data unable to be separated into Wholesale or Retail functions.
³ Pipeline data unable to be separated into Liquid or Gas functions.
⁴ Not covered under Operating Segments.

SHIFT/EXPOSURE DATA (Optional):

	Offshore E&P and Drilling	Marine
Hours worked or exposure per while on duty		
Number of days on per duty cycle		
Number of days off per duty cycle		

Comments:

**Survey on Petroleum Industry
Occupational Injuries, Illnesses and Fatalities for the Year 2007
Data Entry Form 3 -- Non-U.S. Operations: Company Employees**

Company: _____

I do not wish to share my individual company data. Please note, if you check this box you **will not** have access to the Full Benchmarking Reports or other companies' Individual Reports for this type of worker. You will **only** have access to **your** report and the Limited Benchmarking Reports.

For each Function enter the sum of cases for both Severity and Type. Each case requires an entry both for Severity and Type			Classify Cases by Severity Each case should be entered only once in the column representing the greatest severity			Enter Types of Cases Choose either injury or illness Each case should be entered only in one Column as Injury or Illness		
Function	Average Number of Employees (Optional)	Total Hours Worked (Thousands)	Case Severity			Injury	Illness	Total OSHA Recordable Cases
			Death	Days Away From Work	Job Transfer or Restriction (Optional)	All Injury Cases (Optional)	All Illness Cases (Optional)	
This is where you can find the information for the column above on the OSHA 300 Form			Column (G)	Column (H)	Column (I)	Column (M1)	Sum of Columns (M2) + (M3) + (M4) + (M5)	Sum of Columns (M1) + (M2) + (M3) + (M4) + (M5)
A. UPSTREAM								
1. Offshore Expl & Prodn and Drilling ¹								
2. Onshore Expl & Prodn and Drilling ¹								
3. Gas Processing								
4. Upstream Support Services								
B. DOWNSTREAM								
1. Marketing-Wholesale								
2. Marketing-Retail								
3. Marketing-Not separated ²								
4. Refining ¹								
5. Lubricants/Specialties								
6. Downstream Support Services								
C. PIPELINE								
1. Pipeline-Liquid								
2. Pipeline-Gas								
3. Pipeline-Not separated ³								
D. MARINE								
E. RESEARCH & DEVELOPMENT								
F. SUPPORT SERVICES⁴								

¹ Include Power Generation personnel that support this function.

² Marketing data unable to be separated into Wholesale or Retail functions.

³ Pipeline data unable to be separated into Liquid or Gas functions.

⁴ Not covered under Operating Segments.

SHIFT/EXPOSURE DATA (Optional):

	Offshore E&P and Drilling	Marine
Hours worked or exposure per while on duty		
Number of days on per duty cycle		
Number of days off per duty cycle		

Comments:

**Survey on Petroleum Industry
Occupational Injuries, Illnesses and Fatalities for the Year 2007
Data Entry Form 4 -- Non-U.S. Operations: Contract Workers**

Company: _____

I do not wish to share my individual company data. Please note, if you check this box you **will not** have access to the Full Benchmarking Reports or other companies' Individual Reports for this type of worker. You will **only** have access to **your** report and the Limited Benchmarking Reports.

For each Function enter the sum of cases for both Severity and Type. Each case requires an entry both for Severity and Type			Classify Cases by Severity			Enter Types of Cases		Total OSHA Recordable Cases
			Each case should be entered only once in the column representing the greatest severity			Choose either injury or illness. Each case should be entered only in one Column as Injury or Illness		
Function	Average Number of Employees (Optional)	Total Hours Worked (Thousands)	Case Severity			Injury	Illness	Sum of Columns (M1) + (M2) + (M3) + (M4) + (M5)
			Death	Days Away From Work	Job Transfer or Restriction (Optional)	All Injury Cases (Optional)	All Illness Cases (Optional)	
This is where you can find the information for the column above on the OSHA 300 Form			Column (G)	Column (H)	Column (I)	Column (M1)	Sum of Columns (M2) + (M3) + (M4) + (M5)	Sum of Columns (M1) + (M2) + (M3) + (M4) + (M5)
A. UPSTREAM								
1. Offshore Expl & Prodn and Drilling ¹								
2. Onshore Expl & Prodn and Drilling ¹								
3. Gas Processing								
4. Upstream Support Services								
B. DOWNSTREAM								
1. Marketing-Wholesale								
2. Marketing-Retail								
3. Marketing-Not separated ²								
4. Refining ¹								
5. Lubricants/Specialties								
6. Downstream Support Services								
C. PIPELINE								
1. Pipeline-Liquid								
2. Pipeline-Gas								
3. Pipeline-Not separated ³								
D. MARINE								
E. RESEARCH & DEVELOPMENT								
F. SUPPORT SERVICES⁴								

¹ Include Power Generation personnel that support this function.

² Marketing data unable to be separated into Wholesale or Retail functions.

³ Pipeline data unable to be separated into Liquid or Gas functions.

⁴ Not covered under Operating Segments.

SHIFT/EXPOSURE DATA (Optional):

	Offshore E&P and Drilling	Marine
Hours worked or exposure per while on duty		
Number of days on per duty cycle		
Number of days off per duty cycle		

Comments:

Company Name: _____

**Survey on Petroleum Industry
Occupational Injuries, Illnesses and Fatalities for the Year 2007**

**Data Entry Form 5 -- Occupational Fatal Injury Incident
(Complete one form for each incident with one or more fatalities)**

Part A.

U.S. Operations:
Non U.S. Operations:

1. Date of incident: _____ 2. Number of Fatalities in this incident: _____
3. Sex and age of Victims: _____
4. Function (Enter number of fatalities for each)

Expl & Prodn and Drilling ¹ : <input type="text"/>	Refining ¹ : <input type="text"/>	Marine: <input type="text"/>
Gas Processing: <input type="text"/>	Lubricants/Specialties: <input type="text"/>	Research & Dev.: <input type="text"/>
Upstream Support Services: <input type="text"/>	Downstream Support Services: <input type="text"/>	Support Services ⁴ : <input type="text"/>
Marketing -- Wholesale: <input type="text"/>	Pipeline -- Liquid: <input type="text"/>	
Marketing -- Retail: <input type="text"/>	Pipeline -- Gas: <input type="text"/>	
Marketing -- Not separated ² : <input type="text"/>	Pipeline -- Not separated ³ : <input type="text"/>	

5. Offshore _____ Not offshore _____

6. Occupational Category (Enter number for each)

Admin., Mgmt., Sales, Support: <input type="text"/>	Drilling/Well Service Operator: <input type="text"/>	Maintenance, Craftsman: <input type="text"/>
Foreman, Supervisor: <input type="text"/>	Transportation Operator: <input type="text"/>	Manual Labor: <input type="text"/>
Engineer/Scientist/Technician: <input type="text"/>	Heavy Equipment Operator: <input type="text"/>	Other (describe): <input type="text"/>
Process/Equipment Operator: <input type="text"/>	Service Station Workers: <input type="text"/>	

7. Specific job title: _____
8. Medical cause of death: _____

9. Type of incident:

<input type="text"/>	Motor Vehicle	<input type="text"/>	Struck by Equipment
<input type="text"/>	Other Transportation	<input type="text"/>	Fall
<input type="text"/>	Fires and Explosions	<input type="text"/>	Toxic Gas or Liquid
<input type="text"/>	Drowning	<input type="text"/>	Electrocution
<input type="text"/>	Caught In or Between	<input type="text"/>	Other : _____

10. Narrative of Incident. PLEASE REFER TO THE **EXAMPLE NARRATIVE** ON PAGE 3 OF THIS DATA ENTRY FORM FOR AN EXAMPLE OF THE MANNER IN WHICH FATALITY NARRATIVE INFORMATION SHOULD BE PROVIDED.

NOTE: Your company's name will not be disclosed in the annual fatality reports published by API.

¹ Include Power Generation personnel that support this function.
² Marketing data unable to be separated into Wholesale or Retail functions.
³ Pipeline data unable to be separated into Liquid or Gas functions.
⁴ Not covered under Operating Segments.

Company Name: _____

Survey on Petroleum Industry
Occupational Injuries, Illnesses and Fatalities for the Year 2007

Part B. Explanation of Occupational Fatal Injury

11. Function (department) in which accident occurred: _____

12. Occupation of employee killed: _____

13. Explanation of conditions leading up to accident and description of accident

14. What was the exact cause of the accident, and how can such accidents be prevented? Please give sufficient detail to make this information instructive to others.
