

Date of Issue: December 2014

Affected Publication: API Specification 6D, *Specification for Pipeline and Piping Valves*, Twenty-fourth Edition, August 2014

ERRATA 2

(includes Errata 1, October 2014)

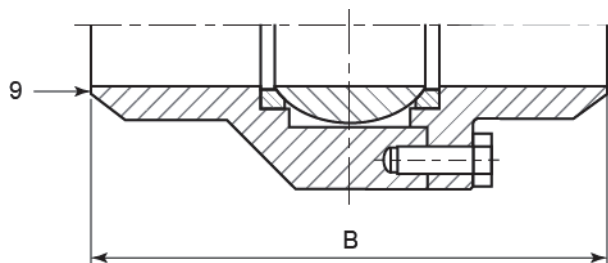
Page 32, **Section 10**, revise the 4th paragraph to read:

See Annex L for details on where coatings/paintings are not allowed.

Page 49, **Figure B.8**, in the **Key**, revise 6) and 7) as follows:

- 6) clapper disc
- 7) seat ring

Page 55, **Figure B.14**, replace part B of the figure as follows:



Page 62, **Table C.2**, header row replace:

Class 350

with

Class 300

Page 79, **Figure F.2**, replace the labels on the figures to read:

- a) Side view
- b) Top view

Page 98, **Figure K.6**, replace the figure as follows:

