

Date of Issue: February 2015

Affected Publication: API Specification 6D, *Specification for Pipeline and Piping Valves*, Twenty-fourth Edition, August 2014

ERRATA 3

(includes Errata 1, October 2014 and Errata 2, December 2014)

Page 32, **Section 10**, revise the 4th paragraph to read:

See Annex L for details on where coatings/paintings are not allowed.

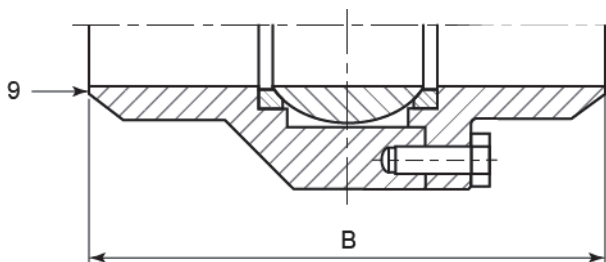
Page 33, **Table 7**, revise lines 5 and 6 to read:

| | | |
|----|--|--|
| 5a | Body/closure/end connection material designation ^{a c} : material grade | On both body/closure/end connection and nameplate; |
| 5b | Body/closure/end connection melt identification (e.g. case or heat number) | On both body/closure/end connection only |
| 6a | Bonnet/cover material designation ^c : material grade | On bonnet/cover |
| 6b | Bonnet/cover melt identification (e.g. heat number) | On bonnet/cover |

Page 49, **Figure B.8**, in the **Key**, revise 6) and 7) as follows:

- 6) clapper disc
- 7) seat ring

Page 55, **Figure B.14**, replace part B of the figure as follows:



Page 62, **Table C.2**, header row replace:

Class 350

with

Class 300

Page 79, **Figure F.2**, replace the labels on the figures to read:

a) Side view

b) Top view

Page 98, **Figure K.6**, replace the figure as follows:

